



## PETER BACH ELECTED TO SOCIETY OF SCHOLARS

**Peter Bach** was elected to membership in the Johns Hopkins Society of Scholars. The Society was established in May 1967 by the trustees of the University to honor distinguished former Johns Hopkins postdoctoral fellow and junior or visiting faculty. The induction will take place on Thursday, April 11th, 2013.

## TWO-DAY SYMPOSIUM IN AUGUST 2013

Plans are underway for a two-day symposium on “Advances in Statistical Methods for Cancer Genetic Epidemiology” to be held at MSKCC on August 22nd and 23rd 2013. This symposium is organized in collaboration with MD Anderson Cancer Center and is being hosted by our department under the auspices of a R13 conference grant awarded to **Jaya Satagopan**. A call for abstracts will be announced in early March. Please bookmark the [symposium web page](#).

## 2ND ANNUAL MSKCC RESEARCH ADMINISTRATORS’ PROFESSIONAL DAY (RAPD)

Friday, March 22, 2013

All staff involved in research administration—including those in central offices, departments, programs, laboratories, operations, information systems, finance, and fundraising—are invited. To stay informed about registration, please follow the [MSK Research Weekly](#) newsletter. (If you currently do not receive this weekly e-mail bulletin, you can be added to the distribution list by emailing the editor, [Debra Schaller-Demers](#).)

## CRDB UPDATE

The Clinical Research Database (CRDB) runs on three platforms including CRDB Client, CRDB Web, and CRDBi. New modules on CRDB include the Sarcoma Upload Form, eRECIST Radiology Review, and eRECIST Radiology EMR Review.



DEPARTMENT CHAIR  
Colin Begg, PhD  
EDITORS  
Natalie Barragan  
Sharon Bayuga, MPH  
Eve Burstein  
Rick Church, MPH  
Adele Meyer  
Prusha Patel, MPH  
Chelsea Seaberg

## FACULTY HIGHLIGHT: MALCOLM PIKE

Although [Malcolm Pike](#), PhD, came to the Department of Epidemiology and Biostatistics in 2009, New York City is just the latest in a long list of places Malcolm has lived. Malcolm grew up in South Africa before studying statistics at the University of Cambridge and earning his PhD in mathematical statistics from Aberdeen University in Scotland. He spent several years studying Burkitt’s lymphoma in Uganda, and served as a University Professor of Preventive Medicine at the USC/Norris Comprehensive Cancer Center, as well as the Director of the Cancer Epidemiology Unit at Oxford University. Malcolm enjoys working at MSK now, but it was his wife, Carolyn Westoff, MD, who was the real reason for his move; she practices and teaches at Columbia University, and serves as the Senior Medical Advisor to Planned Parenthood Federation of America.



Malcolm Pike, PhD

Malcolm is particularly interested in the etiology and chemoprevention of breast, endometrial, and ovarian cancers, and he currently works with the Department of Pathology to study the effects of a woman’s hormonal milieu on cell proliferation rates in the ovary and fallopian tube. He also works with the Department of Radiology to study a breast MRI characteristic called background parenchymal enhancement and its implications for breast cancer risk.

## RESEARCH FUNDING SUCCESS

- ❖ [Colin Begg](#), PhD, and [Jonine Bernstein](#), PhD, received an R21 grant from the NCI titled “Identification of Etiologically Distinct Sub-Types of Breast Cancer.” The premise of this study is that the discovery of new genetic risk factors for breast cancer is hampered by the fact that breast cancer is really a collection of diseases with distinct etiologies. The study will seek to identify etiologically distinct sub-types of breast cancer using genomic profiling of tumors to improve the statistical power for discovering genetic factors that influence the risk of individual sub-types.
- ❖ [Irene Orlow](#), PhD, was awarded an R03 grant from NCI titled “Validation of the use of whole-genome amplified DNA in a population-based study.” This study’s objective is to assess the accuracy of whole-genome amplification of germline DNA for identifying germline variants. If the technique is shown to be accurate it will allow investigators to conduct new genetic studies using DNA from existing studies when the available DNA has become too diminished to be used.
- ❖ [Talya Salz](#), PhD, received the Scholar in Clinical Research Award from the Leukemia and Lymphoma Society. Her study, titled “Toward risk-stratified care for lymphoma survivors,” aims to use linked data from Danish registries to predict the risk of cardiovascular disease among survivors of lymphoma. The prediction of individual cardiovascular risk for lymphoma survivors, taking into account treatments and comorbidities, will enable clinicians to provide personalized, risk-stratified cardiovascular care to each lymphoma survivor. Talya will be working closely with Drs. Kevin Oeffinger and [Andrew Vickers](#) at MSKCC, and Dr. Christoffer Johansen at the Danish Cancer Society.

## RECENT PRESENTATION

[Ann Zauber](#) was a panelist and discussant at the conference “Trends in 21st Century Epidemiology: from Scientific Discoveries to Population Health Impact,” at the National Cancer Institute in Bethesda, MD on December 12-13, 2012. She was involved in the session: “The role of epidemiology in knowledge integration and meta-research.” The goal of the meeting was to bring together thought leaders in epidemiology and adjacent fields to discuss future challenges and plan how epidemiology needs to evolve in a changing landscape. The major outcome of the workshop is to draft 12 recommendations for action to influence the field of epidemiology within the next 12 years.

## BIOSTATISTICS SEMINAR SERIES

307 E. 63<sup>rd</sup> Street, 3rd Floor, Rm. 331  
From 12:00 PM – 1:00 PM

- ❖ March 6, 2013 Sanjib Basu  
Northern Illinois University
- ❖ March 20, 2013 Howard Thaler  
MSKCC
- ❖ March 27, 2013 Venkatraman Seshan  
MSKCC (\*From 4:00 PM - 5:00 PM)
- ❖ April 3, 2013 Benjamin French  
University of Pennsylvania
- ❖ April 10, 2013 Jaya Satagopan  
MSKCC
- ❖ April 17, 2013 Sujata Patil  
MSKCC
- ❖ April 24, 2013 Chaya Moskowitz  
MSKCC

## HEALTH OUTCOMES RESEARCH GROUP SEMINARS

300 E. 66<sup>th</sup> Street, 9th Floor, Rm. 917A  
From 12:00 PM – 1:00 PM

- ❖ March 08, 2013 Deborah Korenstein  
Barriers to Eliminating Overuse of Health  
Services
- ❖ March 22, 2013 Jim Talcott  
Measuring Outcomes to Improve Cancer  
Care
- ❖ April 05, 2013 Par Stattin
- ❖ April 19, 2013 Negin Hajizadeh  
(\*307 E. 63<sup>rd</sup> Street, 3rd Floor, Rm. 331)

## SURVIVORSHIP, OUTCOMES AND RESEARCH PROGRAM SEMINAR SERIES

1275 York Avenue, Rm. M-107  
From 4:00 PM – 5:00 PM

- ❖ April 09, 2013 Joan Warren, PhD  
Epidemiologists, Health Services and  
Economic Branch Applied Research Program,  
National Cancer Institute, Bethesda, MD

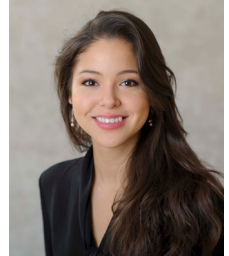


## PUBLICATION

- ❖ **Risk of Asynchronous Contralateral Breast Cancer in Noncarriers of BRCA1 and BRCA2 Mutations With a Family History of Breast Cancer: A Report From the Women's Environmental Cancer and Radiation Epidemiology Study.** Anne Reiner, Jen Brooks, Marinela Capanu, Xiaolin Liang, Malcolm Pike, Colin Begg, Jonine Bernstein and WECARE colleagues published an article in the Journal of Clinical Oncology. They found that young women (<45 years of age) with breast cancer who have a family history of breast cancer and are noncarriers of BRCA1 and BRCA2 mutations have a greater risk of asynchronous contralateral breast cancer compared to other breast cancer survivors. Risk estimates varied based on age at diagnosis, family history of contralateral breast cancer, and degree of relationship to an affected relative. Women with a first-degree family history of bilateral disease were found to have risks of contralateral breast cancer similar to mutation carriers.

## WELCOME NEW STAFF

- ❖ **Valerie Pocus**, Research Study Assistant  
Valerie graduated from Cornell University with a BA in Biology and Society. Previously, she was a hospital administration intern at Somerset Medical Center and a Session Assistant at MSKCC's Solid Tumor Head & Neck Medical Oncology service. She is working with Dr. Elena Elkin and investigators at Weill Medical College on a study of a web-based decision aid for women considering mammography screening.



## WELCOME INTERNS

- ❖ **Peter Li**, Intern  
Peter Li is working with Sara Olson on the MSKCC Pancreatic Tumor Registry (IRB #02-102). Peter, who is an undergraduate student at New York University, will be helping to improve the study's patient databases and assisting with data entry and other aspects of study management.
- ❖ **Qing Zhou**, Graduate Research Assistant  
Qing Zhou is working with Li-Xuan Qin on her R01 study of normalization methods for microRNA sequence data. Qing is in the process of earning her Master of Science in Bioinformatics at Tongji University in Shanghai, China.

## STAFF FAREWELLS

- ❖ **Antonia Bennett**, PhD, has completed her post-doctoral fellowship in the department under the mentorship of Dr. Ethan Basch. She will be starting a new position at University of North Carolina as Assistant Professor in the Department of Health Policy and Management and a member of the UNC Lineberger Comprehensive Cancer Center. Antonia worked on numerous projects during her 2 and a half years with the department. We congratulate her and wish her well in North Carolina.
- ❖ **Kara Fraga**, MPA has served our department for almost 2 years, sharing the role of Administrative Manager with Shireen Lewis. Kara has accepted a full-time position as the Administrator for the MSKCC Department of Neurology where she will be responsible for the department's operations and management. Congratulations to Kara on her new and exciting role. We will miss her, but we know that the Department of Neurology will benefit from her talent and dedication.
- ❖ **Angelica Grasso**, MD, has been working as a Research Fellow on Andrew Vickers' team since fall of 2012. In this capacity, she has collaborated on many projects including some related to prostate and kidney cancer. She is returning to Milan, Italy to finish her urology residency at Ospedale Maggiore Policlinico Mangiagalli and Regina Elena. We thank her for her contributions, and wish her well in her continuing training.
- ❖ **Chelsea Seaberg** has been an RSA in the Epidemiology Service for over 2 years, and previously worked as a Session Assistant in the Department of Urology for 3 years. She has supported the research needs of Ann Zauber, Malcolm Pike, Sara Olson, and Jennifer Brooks on research studies involving pancreatic cancer, brain tumors, and breast MRIs. Chelsea has accepted a position as Program Coordinator for the not-for-profit organization Glamour Gals. She has been a pleasure to work with, and we wish her all the best at her new job.

## March is Colorectal Cancer Awareness Month!

Colorectal cancer is one of the few cancers that can be prevented through screening, as our esteemed colleague **Ann Zauber** would tell you from her work on the National Colonoscopy Study which was featured in the New England Journal of Medicine last year.

Employees or covered dependents with a high risk of developing colorectal cancer (this usually means a family or personal history of colorectal cancer or polyps) as defined by the MSKCC guidelines should call the MSKCC GI Service at 646-497-9065 to schedule a colorectal cancer screening appointment. Employees or covered dependents 50 years of age or older, without a high risk of developing colorectal cancer (average risk) should contact their personal primary care physician for a colorectal cancer screening referral.