

Community

Thriving biomedical research area

We are located on the Upper East Side of Manhattan, in an active community of graduate students, postdocs, medical students, and clinical fellows. MSK also has partnerships with Weill Cornell Medical College and The Rockefeller University and offers several joint graduate training programs.



GSK students in Journal Club

Student Life

Vibrant place to live and study

Between ten and 12 new students join our program each July. From their first day, they become active members of a community of world-class scientists and physicians.

Students participate in weekly journal clubs with their peers to review current topics. Students also have the opportunity to present their research each year in the Graduate Student Seminars.

The Student Council organizes activities throughout the year. Previous events included a weekend ski trip, New York City boat cruise, and bowling night.

All students receive a full scholarship to cover the cost of tuition, fees, and monthly stipend. Students are provided affordable housing in the neighborhood owned by Memorial Sloan Kettering.

Requirements

Students who wish to apply must have already completed a baccalaureate degree program at an accredited institution prior to matriculation. Applicants must have completed college-level science and mathematics courses (see website for full list).

Applicants must submit scores for the Graduate Record Examination (GRE). It is highly recommended that applicants take a GRE Subject Test.

Significant basic science research experience is essential. Letters of recommendation from research mentors and written comments from the applicant about prior research work are major components of the selection process.

All applicants to the Gerstner Sloan Kettering Graduate School of Biomedical Sciences are considered on the basis of merit. The school does not discriminate on the basis of gender, race, color, creed, religion, age, national origin, disability, veteran status, marital status, sexual orientation, or citizenship status in accordance with institutional policy and in compliance with the requirements of the Civil Rights Act, the Education Amendments, the Rehabilitation Act, the Age Discrimination Act, and the Americans with Disabilities Act.

Contact Information

Email: gradstudies@sloankettering.edu

Telephone: 646-888-6639

Mailing Address:

1275 York Avenue, Box 441, New York, NY 10065

Twitter: @GSKGradSchool

Facebook: Gerstner Sloan Kettering Graduate School

For more information about our PhD program and to apply online, please visit:

www.sloankettering.edu



Gerstner Sloan Kettering
Graduate School of Biomedical Sciences

Louis V. Gerstner, Jr.
Graduate School of
Biomedical Sciences
Memorial Sloan Kettering
Cancer Center

PhD Program Cancer Biology



www.sloankettering.edu
gradstudies@sloankettering.edu
646.888.6639



Gerstner Sloan Kettering
Graduate School of Biomedical Sciences

Gerstner Sloan Kettering

Our mission is to train a new generation of scientists who will advance the frontiers of biomedical knowledge and bridge the gap between laboratory research and real-life clinical challenges.

GSK students learn from exposure to current medical challenges and the mentorship of leading scientists who are changing the face of biomedical research.

We hope that you will join us in this extraordinary and exciting environment.

Faculty

World-renowned scientists

Our faculty is composed of more than 120 internationally renowned Memorial Sloan Kettering investigators who maintain a strong commitment to training and mentoring the next generation of biomedical scientists.



GSK student, Marta Kovatcheva and her mentor, Andrew Koff

Many faculty members are physician-scientists, dividing their time between the laboratory bench and the bedside of patients. Gerstner Sloan Kettering faculty members have received numerous awards and honors for working at the forefront of biomedical research.

Why GSK?

Access to exceptional resources and scientists

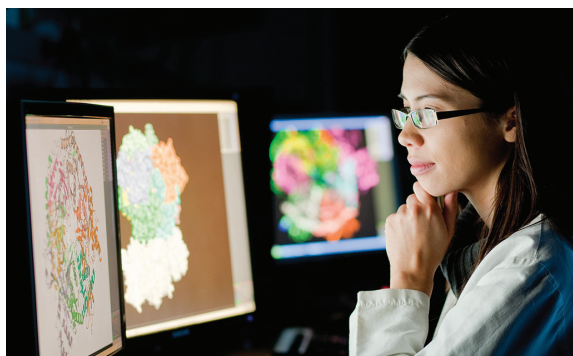
The scientific environment at Sloan Kettering Institute is exceptional for collaborative, translational research, and GSK's core course is well-designed to introduce students to the spectrum of work being done at MSK.

– Hannah Huang

A close-knit collegial community

GSK's unique combination of a small, collaborative graduate student community and a much larger biomedical research center makes it a great place to work and learn.

– Ryan Smith



GSK student, Elizabeth Wasmuth

At the nexus of basic science and clinical research

GSK has a great combination of strong labs working in basic sciences as well as clinical research, which helps in bringing the research from bench to bedside.

– Shefali Krishna

The opportunity to exploit advances in human biology

For me, deciding on a graduate school was easy - I knew the research environment at GSK would provide me the best opportunity to do truly meaningful cancer research.

– Ivan Cohen

Curriculum

Unique and innovative program

The core of our curriculum is completed in the first year as a single, integrated course that takes students from genes and proteins to human pathophysiology.

Students are exposed to cutting-edge research while doing their first-year lab rotations as they choose the lab they'd like to join to begin their dissertation research in the second year.

In addition, students have the opportunity to observe Memorial Sloan Kettering clinics and partner with a clinical mentor.



Craig B. Thompson teaching in the core course

Students have access to a wide array of facilities. The MSK Library offers support with an assortment of resources and services. MSK's Student and Faculty Club creates an informal venue for colleagues to interact.

During the first year, each student is given his or her own study space adjacent to the offices of the graduate school. The Student Center, equipped with state-of-the-art communications and audio-visual equipment, is also available for use by second-year students and beyond.

We have created a graduate school that has risen rapidly to become one of the premier training grounds for cancer biology and a model for training biomedical scientists.

– Kenneth J. Mariani, Dean