

Ready to start planning your care? Call us at [646-926-0945](tel:646-926-0945) to make an appointment.

×



Memorial Sloan Kettering  
Cancer Center

[About Us](#)  
[Sloan Kettering Institute](#)

CHEMICAL BIOLOGY PROGRAM

# The Yueming Li Lab

Search 

[Research](#)

×

[Education & Training](#)

What can we help you find today?  
**Research**

[News & Events](#)

Search

C



Yueming Li, PhD

---

## Research Interests

Basic & Translational research in Cancer and Alzheimer's disease:  
From disease mechanism to therapeutic development.

## Research Areas

- Target Identification & Drug Discovery
- Chemical Biology & Medicinal Chemistry

- Biochemistry & Enzymology
- Biophysics & Structural Biology
- Animal models & Behavior
- Neurobiology & Neuroinflammation
- Autophagy, Protein Aggregation & Clearance

[Learn more](#)

## Research Projects

- [Research Projects](#)

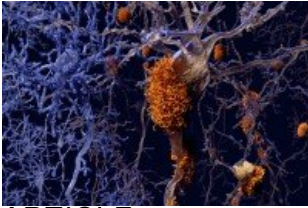


## Featured News



## [At Work: Biochemist Yueming Li](#)

Yueming Li aims to develop new agents that inhibit particular intramembrane proteases associated with cancer.



ARTICLE

## [MSK Study Links Inflammation to Alzheimer's Disease Development](#)

An enzyme that contributes to plaque formation in the brain also serves as a first line of defense against bacteria and viruses, suggesting a link between the two.

## [Nanotechnology May Aid Diagnosis](#)

Biochemist Yueming Li commented on new technology that is three million times more sensitive at detecting Alzheimer's disease and certain cancers....

## Publications Highlights

Nie P, Wu Y, Robinson J, Mekala S, Lee VMY, Li YM. *In Situ* Labeling of Pathogenic Tau Using Photo-Affinity Chemical Probes. *ACS Chem Biol*. 2025 Mar 21;20(3):581-591. doi: 10.1021/acscchembio.5c00073. Epub 2025 Mar 13. PMID: 40079621.

Wong E, Malviya M, Jain T, Liao GP, Kehs Z, Chang JC, Studer L, Scheinberg DA, Li YM. HuM195 and its single-chain variable fragment increase A $\beta$  phagocytosis in microglia via elimination of CD33 inhibitory signaling. *Mol Psychiatry*. 2024 Jul;29(7):2084-2094. doi: 10.1038/s41380-024-02474-z. Epub 2024 Feb 21. PMID: 38383769; PMCID: PMC11336028.

---

Alexander C, Li T, Hattori Y, Chiu D, Frost GR, Jonas L, Liu C, Anderson CJ, Wong E, Park L, Iadecola C, Li YM. Hypoxia Inducible Factor-1 $\alpha$  binds and activates  $\gamma$ -secretase for A $\beta$  production under hypoxia and cerebral hypoperfusion. *Mol Psychiatry*. 2022 Oct;27(10):4264-4273. doi: 10.1038/s41380-022-01676-7. Epub 2022 Jun 28. PMID: 35764706; PMCID: PMC9722522.

---

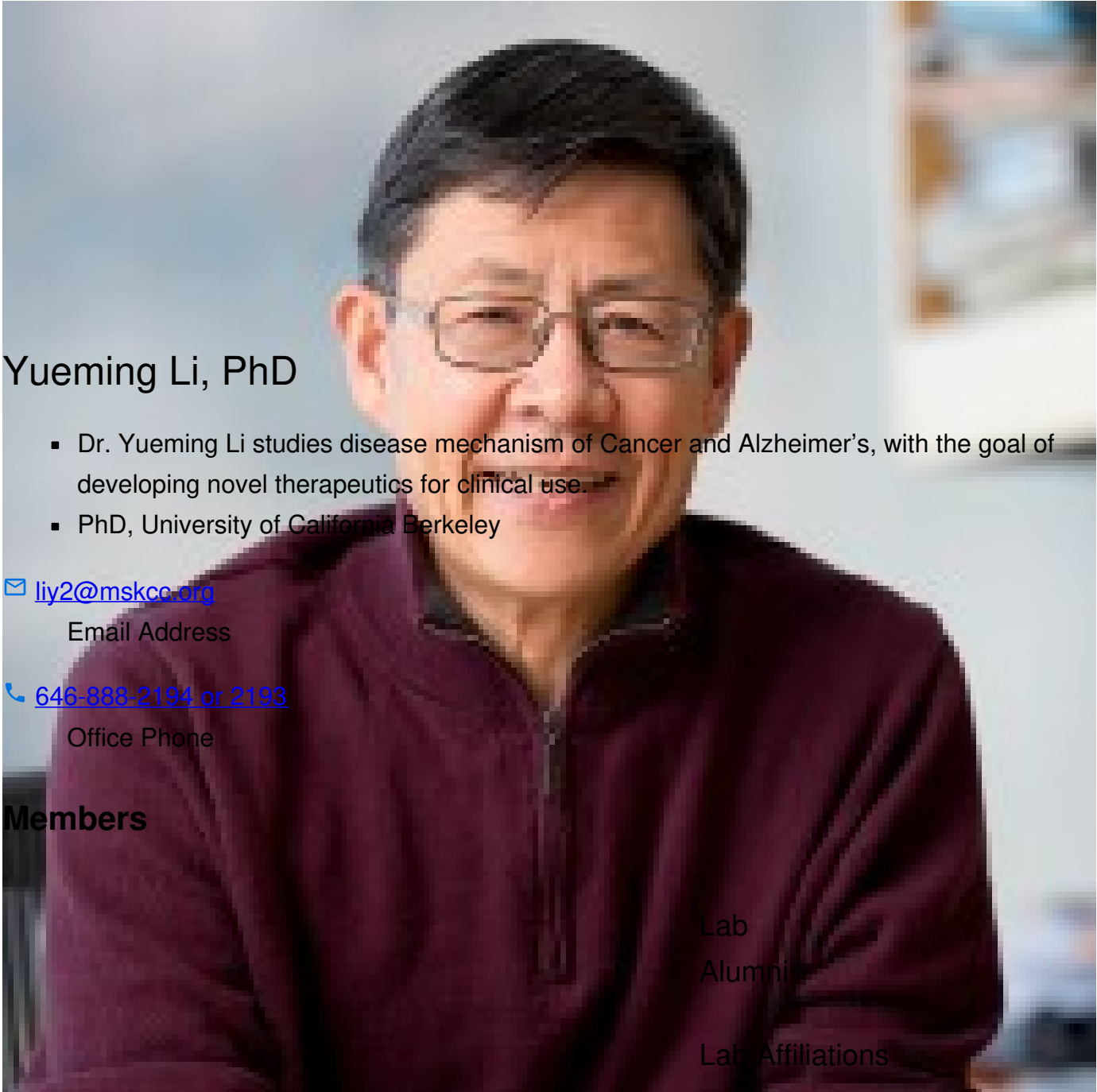
Nie P, Kalidindi T, Nagle VL, et al. Imaging of Cancer  $\gamma$ -Secretase Activity Using an Inhibitor-Based PET Probe. *Clin Cancer Res*. 2021;27(22):6145-6155. doi:10.1158/1078-0432.CCR-21-0940

---

Hur, J.-Y., Frost, G. R., Wu, X., Crump, C., Pan, S. J., Wong, E., ... Li, Y.-M. (2020). The innate immunity protein IFITM3 modulates  $\gamma$ -secretase in Alzheimer's disease. *Nature*. doi:10.1038/s41586-020-2681-2

[View All Publications](#)

## People



## Yueming Li, PhD

- Dr. Yueming Li studies disease mechanism of Cancer and Alzheimer's, with the goal of developing novel therapeutics for clinical use.
- PhD, University of California Berkeley

✉ [liy2@mskcc.org](mailto:liy2@mskcc.org)

Email Address

☎ [646-888-2194](tel:646-888-2194) or [2193](tel:646-888-2193)

Office Phone

### Members

Lab

Alumni

Lab Affiliations



Yueming Li

Lab Head



Pascale M. Presendor

Administrative Assistant

## Open Positions

To learn more about available

postdoctoral opportunities, please visit our [Career Center](#)

To learn more about compensation and benefits for postdoctoral researchers at MSK, please visit

[Resources for Postdocs](#)

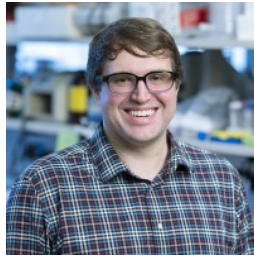
---

## Career Opportunities

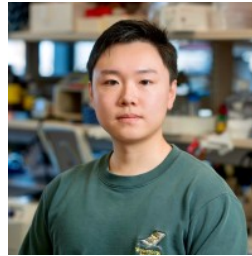
[Apply](#)



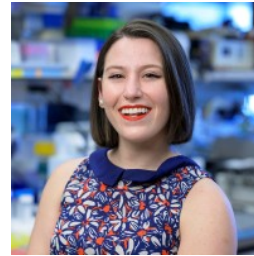
Shekar Mekala  
Senior Research Scientist



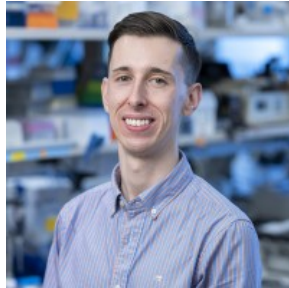
Grady Nelson  
Postdoctoral Fellow



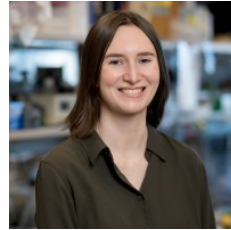
Jingze Wu  
Postdoctoral Fellow



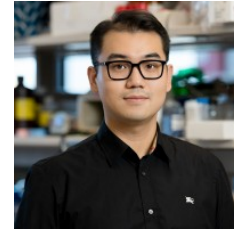
Jessica Falci  
Postdoctoral Fellow



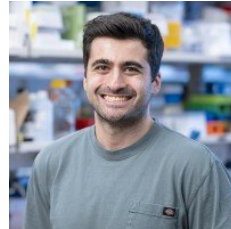
Daniel W. Worroll III  
Postdoctoral Fellow



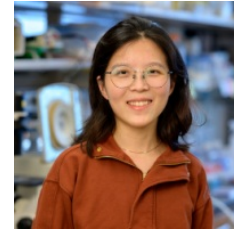
Zoe Kehs  
Graduate Student



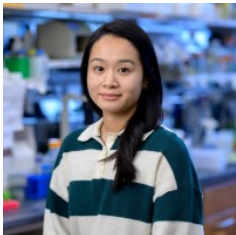
Chenge Liu  
Graduate Student



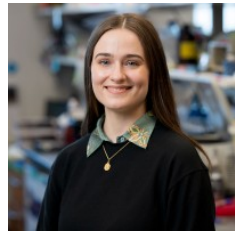
Cyrus Nikain  
Graduate Student



Emily Wu  
Graduate Student



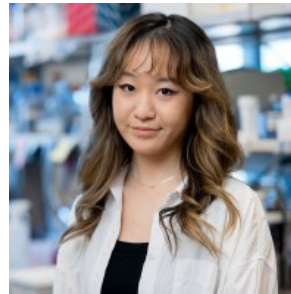
Yangjingyi Ruan  
Graduate Student



Abigail Cross  
Graduate Student



Alana Williams  
Graduate Student



Huizhong (Deney) Li  
Graduate Student

[now \(https://www.mskcc.org/research/ski/labs/yueming-li/career-opportunities\)](https://www.mskcc.org/research/ski/labs/yueming-li/career-opportunities)

## Get in Touch

✉ [liy2@mskcc.org](mailto:liy2@mskcc.org)  
Lab Head Email

☎ [646-888-2194](tel:646-888-2194) or [2193](tel:646-2193)  
Office Phone

☎ [646-422-0640](tel:646-422-0640)

Office Fax

 [646-888-2204](tel:646-888-2204) or [2531](tel:646-888-2531)

Lab Phone

## Disclosures

Members of the MSK Community often work with pharmaceutical, device, biotechnology, and life sciences companies, and other organizations outside of MSK, to find safe and effective cancer treatments, to improve patient care, and to educate the health care community. These activities outside of MSK further our mission, provide productive collaborations, and promote the practical application of scientific discoveries.

MSK requires doctors, faculty members, and leaders to report (“disclose”) the relationships and financial interests they have with external entities. As a commitment to transparency with our community, we make that information available to the public. Not all disclosed interests and relationships present conflicts of interest. MSK reviews all disclosed interests and relationships to assess whether a conflict of interest exists and whether formal COI management is needed.

Yueming Li discloses the following relationships and financial interests:

- Biogen MA Inc.  
Professional Services and Activities
- BrightFocus Foundation  
Professional Services and Activities
- Cure Alzheimer's Fund  
Professional Services and Activities
- Jiangsu Continental Medical Development Co  
Intellectual Property Rights

The information published here is a complement to other publicly reported data and is for a specific annual disclosure period. There may be differences between information on this and other public sites as a result of different reporting periods and/or the various ways relationships and financial interests are categorized by organizations that publish such data.

---

This page and data include information for a specific MSK annual disclosure period (January 1, 2024 through disclosure submission in spring 2025). This data reflects interests that may or may not still exist. This data is updated annually.

Learn more about MSK's COI policies [here](#) . For questions regarding MSK's COI-related policies and procedures, email MSK's Compliance Office at [ecoi@mskcc.org](mailto:ecoi@mskcc.org) .

[View all disclosures \(https://www.mskcc.org/disclosures\)](https://www.mskcc.org/disclosures)

© 2026 Memorial Sloan Kettering Cancer Center