



Welcome to GSK
Search

IMMUNOLOGY PROGRAM

The Morgan Huse Lab

Admissions

What can we help you find today?

[Cancer Biology](#)

Research

[Research](#)

[Alumni](#)



Morgan Huse, PhD

Deputy Director for Core Technologies; Member, Immunology Program

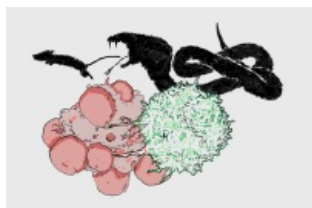
Professor

In the Huse lab, we combine imaging technology with synthetic chemistry and materials science to understand how immune cells communicate.

[View Lab Overview \(https://www.sloankettering.edu/research-areas/labs/morgan-huse/overview\)](https://www.sloankettering.edu/research-areas/labs/morgan-huse/overview)



Featured News



FEATURE

[How Do Immune Cells Kill Their Prey?](#)

When an immune cell faces a foe, it has more than chemical weapons at its disposal.



[At Work: Immunologist Morgan Huse](#)

Immunologist Morgan Huse wants to combine synthetic chemistry and protein engineering with imaging to learn about immune cell signaling.



EVENT

[2017 MSK Convocation and Commencement Ceremony Celebrates Distinguished Scientists and Young Scholars](#)

Degrees were presented and awards were given at the 38th annual ceremony held on May 18.

[View All Featured News](#)

Publications Highlights

[Winer, B. Y., Settle, A. H., Yakimov, A. M., Jeronimo, C., Lazarov, T., Tipping, M., Saoi, M., Sawh, A., Sepp, A.-L. L., Galiano, M., Perry, J. S. A., Wong, Y. Y., Geissmann, F., Cross, J., Zhou, T., Kam, L. C., Pasoli, H. A., Hohl, T., Cyster, J. G., Weiner, O. D., and Huse, M. \(2024\). Plasma Membrane Abundance Dictates Phagocytic Capacity and Functional Crosstalk in Myeloid Cells. *Sci. Immunol.* 9, eadl2388.](#)

[de Jesus, M. M., Settle, A. H., Vorselen, D., Gaetjens, T. K., Galiano, M., Wong, Y. Y., Fu, T.-M., Santosa, E., Winer, B. Y., Tamzalit, F., Wang, M. S., Bao, Z., Sun, J. C., Shah, P., Theriot, J. A., Abel, S. M., and Huse, M. \(2024\). Topographical Analysis of Immune Cell Interactions Reveals a Biomechanical Signature for Immune Cytolysis. *Sci. Immunol.* 9, eadj2898.](#)

[Tello-Lafoz, M., Srpan, K., Sanchez, E. E., Hu, J., Remsik, J., Romin, Y., Calò, A., Hoen,](#)

[D., Bhanot, U., Morris, L., Boire, A., Hsu, K. C., Massagué, J., Huse, M. *, and Er, E. E.* \(2021\) Cytotoxic Lymphocytes Target Characteristic Biophysical Vulnerabilities in Cancer. *Immunity* 54, 1037-1054. * corresponding authors](#)

[Basu, R., Whitlock, B. M., Husson, J., Le Floc'h, A., Jin, W., Oylar-Yaniv, A., Dotiwala, F., Giannone, G., Hivroz, C., Biais, N., Lieberman, J., Kam, L. C., and Huse, M. \(2016\). Cytotoxic T Cells Use Mechanical Force to Potentiate Target Cell Killing. *Cell* 165, 100-110.](#)

[View All Publications](#)

People

Morgan Huse, PhD

Deputy Director for Core Technologies; Member, Immunology Program

Professor

- Immunologist Morgan Huse studies the structure and function of immune cell-cell interactions.
- PhD, The Rockefeller University

✉ husem@mskcc.org

Email Address

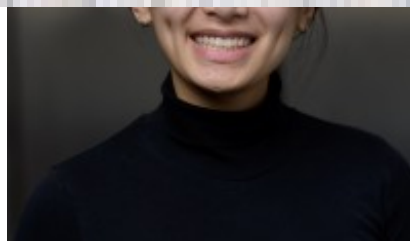
☎ [646-888-2379](tel:646-888-2379)

Office Phone

Members



Yassmin Elbanna
Graduate Student



Ruiyang Guo
Graduate Student

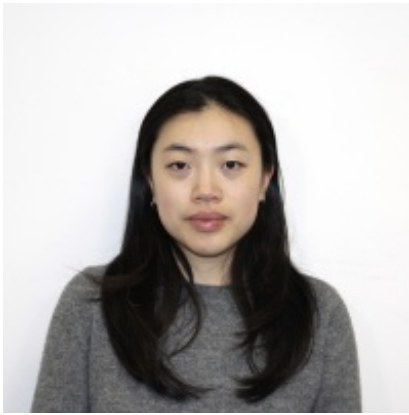
Lab
Alumni

Lab Affiliations

Achievements

- Searle Scholar Award (2008)

Open Positions



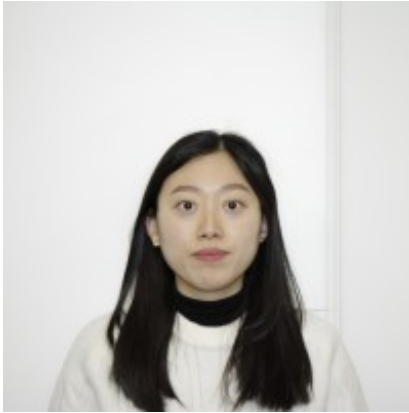
Aliya Holland
Graduate Student



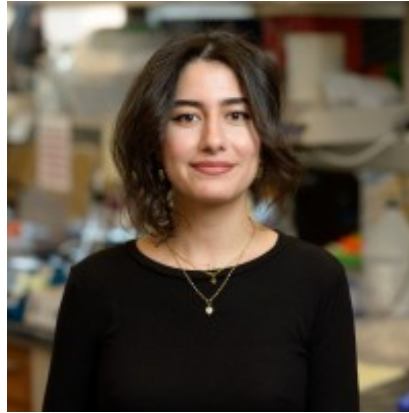
Morgan Huse
Member

To learn more about available postdoctoral opportunities, please visit our [Career Center](#)

To learn more about compensation and benefits for postdoctoral researchers at MSK, please visit [Resources for Postdocs](#)



Esther Lee
Graduate Student
Alexandra Ramadhin
Senior Administrative Assistant



Farah Mustapha
Research Scholar
Evelyn Strickland
Research Scholar

Get in Touch

✉ husem@mskcc.org

Lab Head Email

☎ [646-888-2379](tel:646-888-2379)

Office Phone

☎ [646-888-2362](tel:646-888-2362)

Lab Phone



Anastasiia Vaska
Research Technician



Benjamin Winer
Visiting Investigator

Disclosures

Members of the MSK Community often work with pharmaceutical, device, biotechnology, and life sciences companies, and other organizations outside of MSK, to find safe and effective cancer treatments, to improve patient care, and to educate the health care community. These activities outside of MSK further our mission, provide productive collaborations, and

promote the practical application of scientific discoveries.

MSK requires doctors, faculty members, and leaders to report (“disclose”) the relationships and financial interests they have with external entities. As a commitment to transparency with our community, we make that information available to the public. Not all disclosed interests and relationships present conflicts of interest. MSK reviews all disclosed interests and relationships to

assess whether a conflict of interest exists and whether formal COI management is needed.

Morgan Huse discloses the following relationships and financial interests:

No disclosures meeting criteria for time period

The information published here is a complement to other publicly reported data and is for a specific annual disclosure period. There may be differences between information on this and other public sites as a result of different reporting periods and/or the various ways relationships and financial interests are categorized by organizations that publish such data.

This page and data include information for a specific MSK annual disclosure period (January 1, 2024 through disclosure submission in spring 2025). This data reflects interests that may or may not still exist. This data is updated annually.

Learn more about MSK's COI policies [here](#) . For questions regarding MSK's COI-related policies and procedures, email MSK's Compliance Office at ecoi@mskcc.org .

[View all disclosures \(https://www.sloankettering.edu/disclosures\)](https://www.sloankettering.edu/disclosures)

© 2026 Louis V. Gerstner Jr. Graduate School of Biomedical Sciences Memorial Sloan Kettering Cancer Center