



Welcome to GSK
Search

IMMUNO-ONCOLOGY PROGRAM

The Alan Hanash Lab

Admissions

What can we help you find today?

[Cancer Biology](#)

[Research](#)

[Research](#)

[Alumni](#)



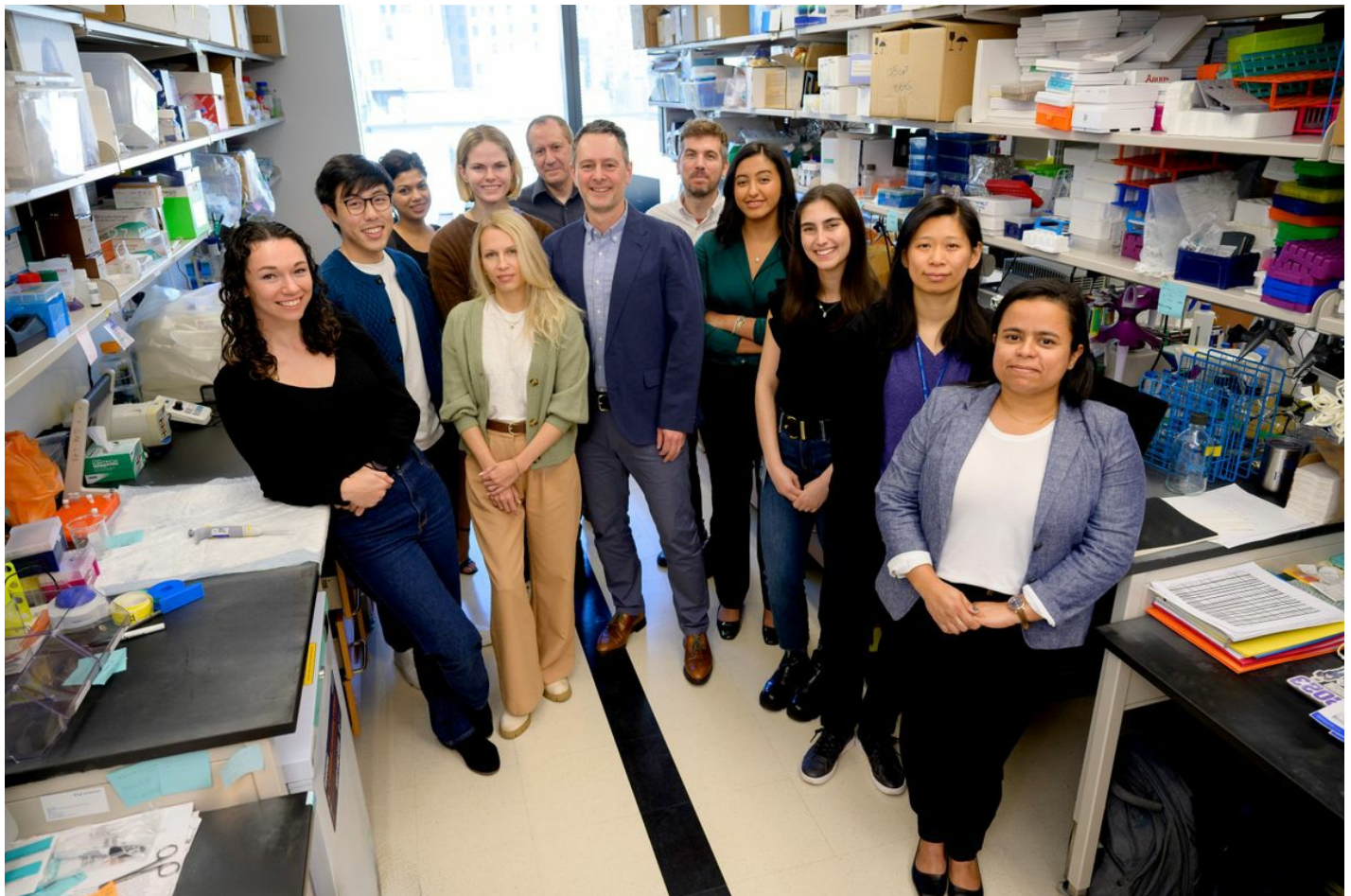
Alan M. Hanash, MD, PhD

Associate Attending Physician; Associate Member

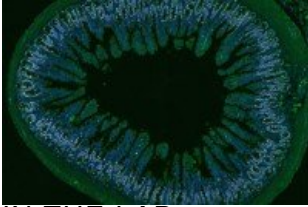
Associate Professor

Alan Hanash is an Associate Member of Memorial Sloan Kettering and an Attending Physician on the Adult Bone Marrow Transplant Service in the Department of Medicine. Dr. Hanash's research focuses on the immunology of hematopoietic transplantation and immune-mediated mechanisms of tissue damage and regeneration.

[View Lab Overview \(https://www.sloankettering.edu/research-areas/labs/alan-hanash/overview\)](https://www.sloankettering.edu/research-areas/labs/alan-hanash/overview)



Featured News



IN THE LAB

[Immune System Molecule Could Become New Treatment for Graft-Versus-Host Disease](#)

Scientists are using a molecule from the immune system to combat this serious complication in a new way.

Publications Highlights

Ponce DM, Alousi AM, Nakamura R, Slingerland J, Calafiore M, Sandhu KS, Barker JN, Devlin S, Shia J, Giralt S, Perales MA, Moore G, Fatmi S, Soto C, Gomes A, Giardina P, Marcello L, Yan XQ, Tang T, Dreyer K, Chen J, Daley WL, Peled JU, van den Brink MRM, Hanash AM. A phase 2 study of Interleukin-22 and systemic corticosteroids as initial treatment for acute GVHD of the lower GI tract. *Blood*. 2023 Mar 23; 141(12):1389-1401. PMID: 36399701. <https://pubmed.ncbi.nlm.nih.gov/36399701/>

Calafiore M, Fu YY, Vinci P, Arnhold V, Chang WY, Jansen SA, Egorova A, Takashima S, Kuttiyara J, Ito T, Serody J, Nakae S, Turnquist H, van Es J, Clevers H, Lindemans CA, Blazar BR, Hanash AM. A tissue-intrinsic IL-33/EGF circuit promotes epithelial regeneration after intestinal injury. *Nature Communications*. 2023 September 5;14(1):5411. PubMed PMID: 37669929; PubMed Central PMCID: PMC10480426; DOI: 10.1038/s41467-023-40993-5. <https://pubmed.ncbi.nlm.nih.gov/37669929/>

Arnhold V, Chang WY, Jansen SA, Thangavelu G, Calafiore M, Vinci P, Fu YY, Ito T, Takashima S, Egorova A, Kuttiyara J, Perlstein A, van Hoesel M, Liu C, Blazar BR, Lindemans CA, Hanash AM. Corticosteroids impair epithelial regeneration in immune-mediated intestinal damage. *JCI*. 2024 Apr 1; 134(7): e155880. PubMed PMID: 38349762; PubMed Central PMCID: PMC10977993; DOI: 10.1172/JCI155880. <https://pubmed.ncbi.nlm.nih.gov/38349762/>

Takashima S, Sharma R, Chang W, Calafiore M, Fu YY, Jansen SA, Ito T, Egorova A,

Kuttiyara J, Arnhold V, Sharrock J, Santosa E, Chaudhary O, Geiger H, Iwasaki H, Liu C, Sun J, Robine N, Mazutis L, Lindemans CA, Hanash AM. STAT1 regulates immune-mediated intestinal stem cell proliferation and epithelial regeneration. *Nature Communications*. 2025 Jan 2;16(1):138. PubMed PMID: 39746933; PMCID: PubMed Central PMC11697299. DOI: 10.1038/s41467-024-55227-5.


<https://pubmed.ncbi.nlm.nih.gov/39746933/>

DeWolf S, Kuttiyara J, Vinci P, Fei T, Slingerland J, Katsamakidis Z, Fein J, Gipson B, Lorenc R, Zinsmeyer V, Marcello L, Giardina P, Donohoe W, Shah G, Lin R, Papadopoulos E, Gyurkocza B, Shaffer B, Tallman M, Politikos I, Giralt S, Barker J, Perales MA, Tamari R, Abdel-Wahab O, Cho C, Hsu K, Peled JU, van den Brink MRM, Hanash AM. Bone marrow and blood demonstrate distinct immune reconstitution patterns and correlations with relapse post-transplant. *Blood Advances*. In press.

<https://pmc.ncbi.nlm.nih.gov/articles/PMC12235316/>

[View All Publications](#)

People



Alan M. Hanash, MD, PhD

Associate Attending Physician; Associate Member

Associate Professor

- Physician-scientist Alan Hanash studies transplant immunology and immune-mediated mechanisms of tissue damage and regeneration.
- MD, University of Miami

 hanasha@mskcc.org

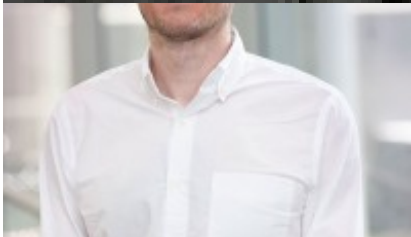
Email Address

 [View physician profile](#)

Physician profile

Members

Lab
Alumni



Kimon Argyropoulos
Assistant Attending



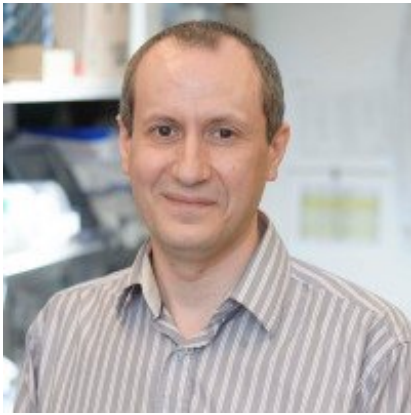
Marina Burgos da Silva
Senior Research Scientist

Lab Affiliations

Achievements

- ASCI Young Physician-Scientist Award (2014)
Amy Strelzer Manasevit Research

- Program Scholar (2014)

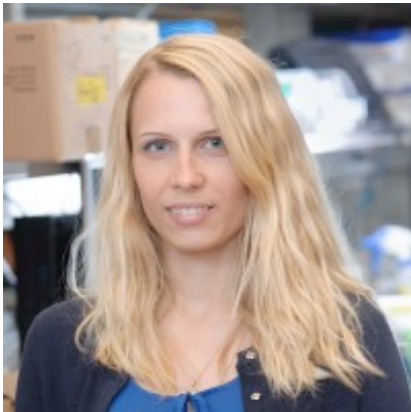


Marco Calafiore
Senior Researcher

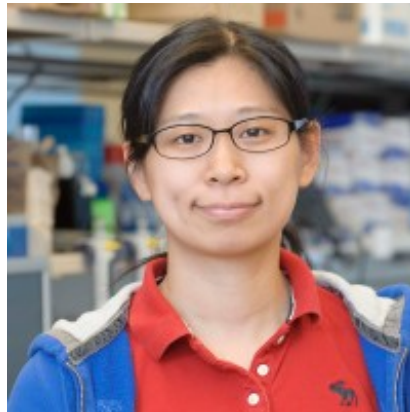


Winston Chang
Graduate Student

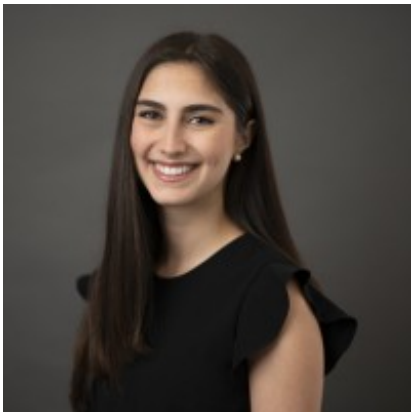
- ASH Outstanding Abstract Achievement Award for Anna Mertelsmann (2013)
- ASH Scholar Award for Junior Faculty (2012)
- ASBMT New Investigator Award (2011)



Anastasiya Egorova
Lab Manager



Ya-Yuan Fu
Senior Research Scientist
Rachel Lorenc
NE Medical Student



Andrea Lang Goldgewicht
Graduate Student



Toshihisa Satta
Research Fellow

Open Positions

To learn more about available postdoctoral opportunities, please visit our [Career Center](#)

To learn more about compensation and benefits for postdoctoral researchers at MSK, please visit [Resources for Postdocs](#)

Get in Touch

✉ hanasha@mskcc.org

Lab Head Email

☎ [646-888-3437](tel:646-888-3437)

Lab Phone

Disclosures

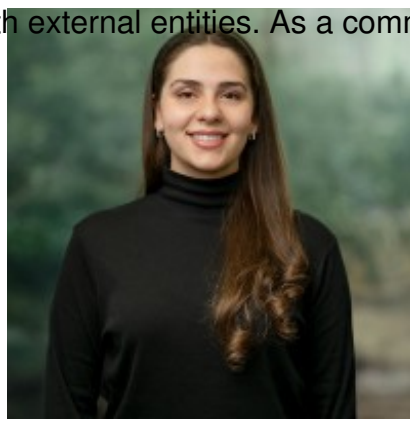
Members of the MSK Community often work with pharmaceutical, device, biotechnology, and life sciences companies, and other

organizations outside of MSK, to find safe and effective cancer treatments, to improve patient care, and to educate the health care community. These activities outside of MSK further our mission, provide productive collaborations, and promote the practical application of scientific discoveries.

MSK requires doctors, faculty members, and leaders to report (“disclose”) the relationships and



Shuichiro Takashima
Research Fellow



Valerie Tirado
MSK Bridge Program Scholar

financial interests they have with external entities. As a commitment to transparency with our community, we make that information available to the public. Not all disclosed interests and relationships present conflicts of interest. MSK reviews all disclosed interests and relationships to assess whether a conflict of interest exists and whether formal COI management is needed.

Alan M. Hanash discloses the

following relationships and financial interests:

- American Society for Transplantation and Cellular Therapy (ASTCT)
Professional Services and Activities
- Evive Biotech
Professional Services and Activities (Uncompensated)
- Generon (Shanghai) Corporation Ltd.
Professional Services and Activities (Uncompensated)

The information published here is a complement to other publicly reported data and is for a specific annual disclosure period. There may be differences between information on this and other public sites as a result of different reporting periods and/or the various ways relationships and financial interests are categorized by organizations that publish such data.

This page and data include information for a specific MSK annual disclosure period (January 1, 2024 through disclosure submission in spring 2025). This data reflects interests that may or may not still exist. This data is updated annually.

Learn more about MSK's COI policies [here](#) . For questions regarding MSK's COI-related policies and procedures, email MSK's Compliance Office at ecoi@mskcc.org .

[View all disclosures \(https://www.sloankettering.edu/disclosures\)](https://www.sloankettering.edu/disclosures)

