

Ready to start planning your care? Call us at [646-926-0945](tel:646-926-0945) to make an appointment.

×



Memorial Sloan Kettering
Cancer Center

[About Us](#)
[Sloan Kettering Institute](#)

IMMUNOLOGY PROGRAM

Search

The Jayanta Chaudhuri Lab

[Research](#)



[Education & Training](#)

What can we help you find today?
Research

[News & Events](#)
Search

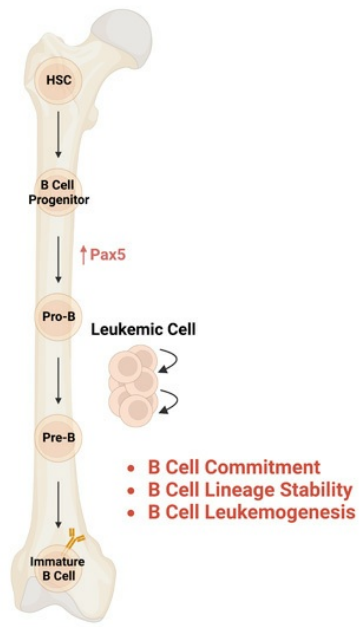


Jayanta Chaudhuri, PhD

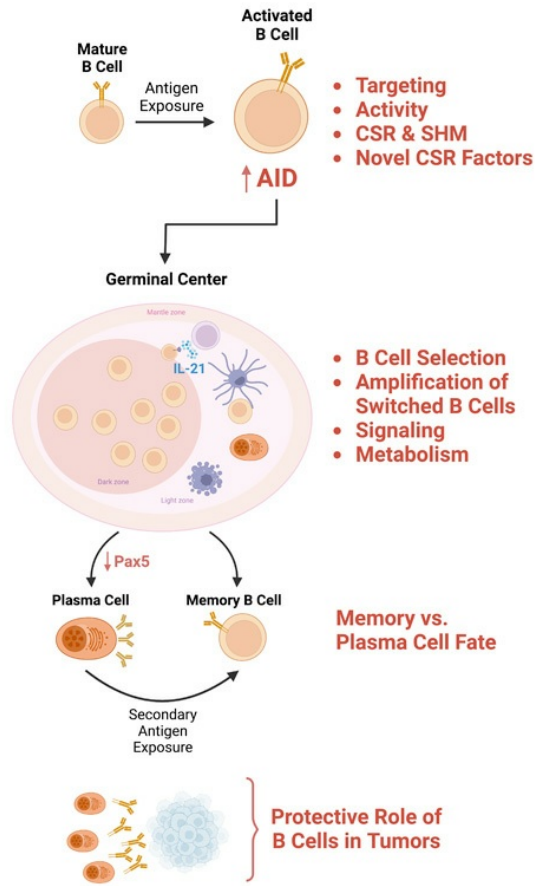
Laboratory of Molecular and Cellular Immunology

Recombination, genomic integrity, and heterogeneity in B cells

Bone Marrow



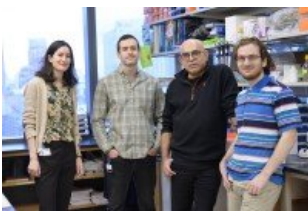
Periphery—Spleen, Lymph Nodes, Peyer's Patches



[View Lab Overview \(https://www.mskcc.org/research/ski/labs/jayanta-chaudhuri/overview\)](https://www.mskcc.org/research/ski/labs/jayanta-chaudhuri/overview)



Featured News



IN THE LAB

[SKI Research Reveals New Insights into Immune Response to Viral Infections — Including COVID-19](#)

Research from Sloan Kettering Institute immunologists suggests that the body may mount an immune response to respiratory viruses that lasts longer than previously thought. The discovery could impact the timing of COVID-19 vaccinations.



[At Work: Immunologist Jayanta Chaudhuri](#)

Immunologist Jayanta Chaudhuri has long been interested in biology, Mendelian genetics, and the story of how life evolved.



IN THE COMMUNITY

[Giving Supplies a Second Life, and Making an Environmental Impact in the Process](#)

Memorial Sloan Kettering “green” committees focus on waste reduction and energy efficiency throughout the institution while donating useful supplies to New York–area nonprofits.

[View All Featured News](#)

Publications Highlights

Chowdhury, P., Belcheva, K. T., Smolkin, R. M., Cols, M., Fontenot, J. D., Yewdell, W. T., & Chaudhuri, J. (2025). IL-2R α is dispensable for murine B cell development and humoral response. *Journal of Immunology*, 214(4), 694–702.

<https://doi.org/10.1093/jimmun/vkae045>

Kim, Y., Manara, F., Grassmann, S., Belcheva, K. T., Reyes, K., Kim, H., Downs-Canner, S., Yewdell, W. T., Sun, J. C., & Chaudhuri, J. (2025). IL-21 shapes the B cell response in a context-dependent manner. *Cell Reports*, 44(1), 115190.

<https://doi.org/10.1016/j.celrep.2024.115190>

Sharma, R., Smolkin, R. M., Chowdhury, P., Fernandez, K. C., Kim, Y., Cols, M., Alread, W., Yen, W.-F., Hu, W., Wang, Z.-M., Violante, S., Chaligné, R., Li, M. O., Cross, J. R., & Chaudhuri, J. (2023). Distinct metabolic requirements regulate B cell activation and germinal center responses. *Nature Immunology*, 24(8), 1358–1369.

<https://doi.org/10.1038/s41590-023-01540-y>

Fernandez, K. C., Feeney, L., Smolkin, R. M., Yen, W.-F., Matthews, A. J., Alread, W., Petrini, J. H. J., & Chaudhuri, J. (2022). The structure-selective endonucleases GEN1 and MUS81 mediate complementary functions in safeguarding the genome of proliferating B lymphocytes. *eLife*, 11, e77073. <https://doi.org/10.7554/eLife.77073>

Maekawa, K., Yamada, S., Sharma, R., Chaudhuri, J., & Keeney, S. (2022). Triple-helix potential of the mouse genome. *Proceedings of the National Academy of Sciences of the United States of America*, 119(19), e2203967119. <https://doi.org/10.1073/pnas.2203967119>

[View All Publications](#)

People



Jayanta Chaudhuri, PhD

- Immunologist Jayanta Chaudhuri studies the mechanisms of immunoglobulin gene diversification.
- PhD, Albert Einstein College of Medicine

✉ chaudhuj@mskcc.org

Email Address

☎ [646-888-2357](tel:646-888-2357)


Office Phone

Members

Lab

Alumni

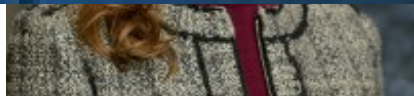
Lab Affiliations



Jayanta Chaudhuri

Principal Investigator

postdoctoral opportunities, please visit our [Career Center](#)



Stephanie Downs-Canner

Assistant Attending Surgeon

Open Positions

To learn more about available

To learn more about compensation and benefits for postdoctoral researchers at MSK, please visit [Resources for Postdocs](#)

Postdoctoral Position



Jennifer Lue
Assistant Attending



Francesca Manara
Postdoctoral Research Fellow

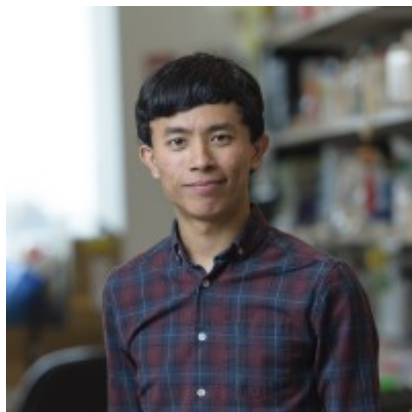
[Apply](#)



Laura Nicolas Gomariz
Postdoctoral Research Fellow



Maria Maddalena Perra
Postdoctoral Research Fellow



Keith Conrad Fernandez
Graduate Student



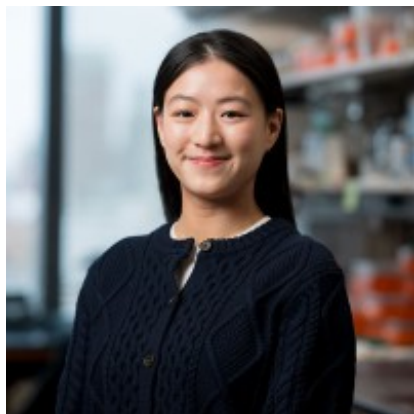
Kalina Belcheva
Graduate Student

[now \(https://www.mskcc.org/research/ski/labs/jayanta-chaudhuri/postdoctoral-position\)](https://www.mskcc.org/research/ski/labs/jayanta-chaudhuri/postdoctoral-position)

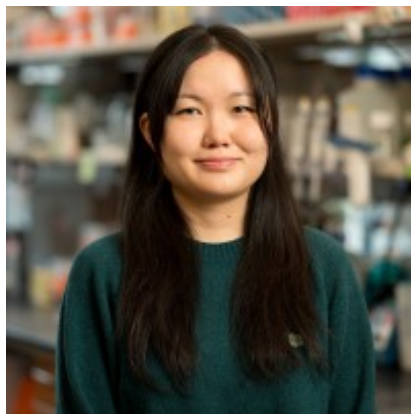
Rotation Students

[Apply now \(https://www.mskcc.org/research/ski/labs/jayanta-chaudhuri/rotation-students\)](https://www.mskcc.org/research/ski/labs/jayanta-chaudhuri/rotation-students)

Technician

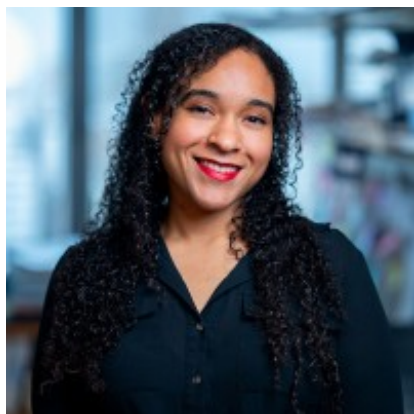


Vivian Kuan
Graduate Student



Dulguun Baasan
Graduate Student

[Apply](#)



Kanelly Reyes
Research Technician

Matthew Kantorski
Research Technician
Lorraine Hernandez Delgado
MSK Bridge Scholar



Veronica Shields
Administrative Assistant

[now \(https://www.mskcc.org/research/ski/labs/jayanta-chaudhuri/technician\)](https://www.mskcc.org/research/ski/labs/jayanta-chaudhuri/technician)

[View All Open Positions](#)

Get in Touch

✉ chaudhuj@mskcc.org

Lab Head Email

☎ [646-888-2357](tel:646-888-2357)

Office Phone

☎ [646-422-0495](tel:646-422-0495)

Office Fax

 [646-888-2334](tel:646-888-2334)

Lab Phone

 [646-888-2614](tel:646-888-2614)

Lab Phone

Disclosures

Members of the MSK Community often work with pharmaceutical, device, biotechnology, and life sciences companies, and other organizations outside of MSK, to find safe and effective cancer treatments, to improve patient care, and to educate the health care community. These activities outside of MSK further our mission, provide productive collaborations, and promote the practical application of scientific discoveries.

MSK requires doctors, faculty members, and leaders to report (“disclose”) the relationships and financial interests they have with external entities. As a commitment to transparency with our community, we make that information available to the public. Not all disclosed interests and relationships present conflicts of interest. MSK reviews all disclosed interests and relationships to assess whether a conflict of interest exists and whether formal COI management is needed.

Jayanta Chaudhuri discloses the following relationships and financial interests:

No disclosures meeting criteria for time period

The information published here is a complement to other publicly reported data and is for a specific annual disclosure period. There may be differences between information on this and other public sites as a result of different reporting periods and/or the various ways relationships and financial interests are categorized by organizations that publish such data.

This page and data include information for a specific MSK annual disclosure period (January 1, 2024 through disclosure submission in spring 2025). This data reflects interests that may or may not still exist. This data is updated annually.

Learn more about MSK’s COI policies [here](#) . For questions regarding MSK’s COI-related policies and procedures, email MSK’s Compliance Office at ecoi@mskcc.org .

[View all disclosures \(https://www.mskcc.org/disclosures\)](https://www.mskcc.org/disclosures)

© 2026 Memorial Sloan Kettering Cancer Center