



Welcome to GSK
Search

MOLECULAR PHARMACOLOGY PROGRAM

The Jan Grimm Lab

×
Applications

What can we help you find today?

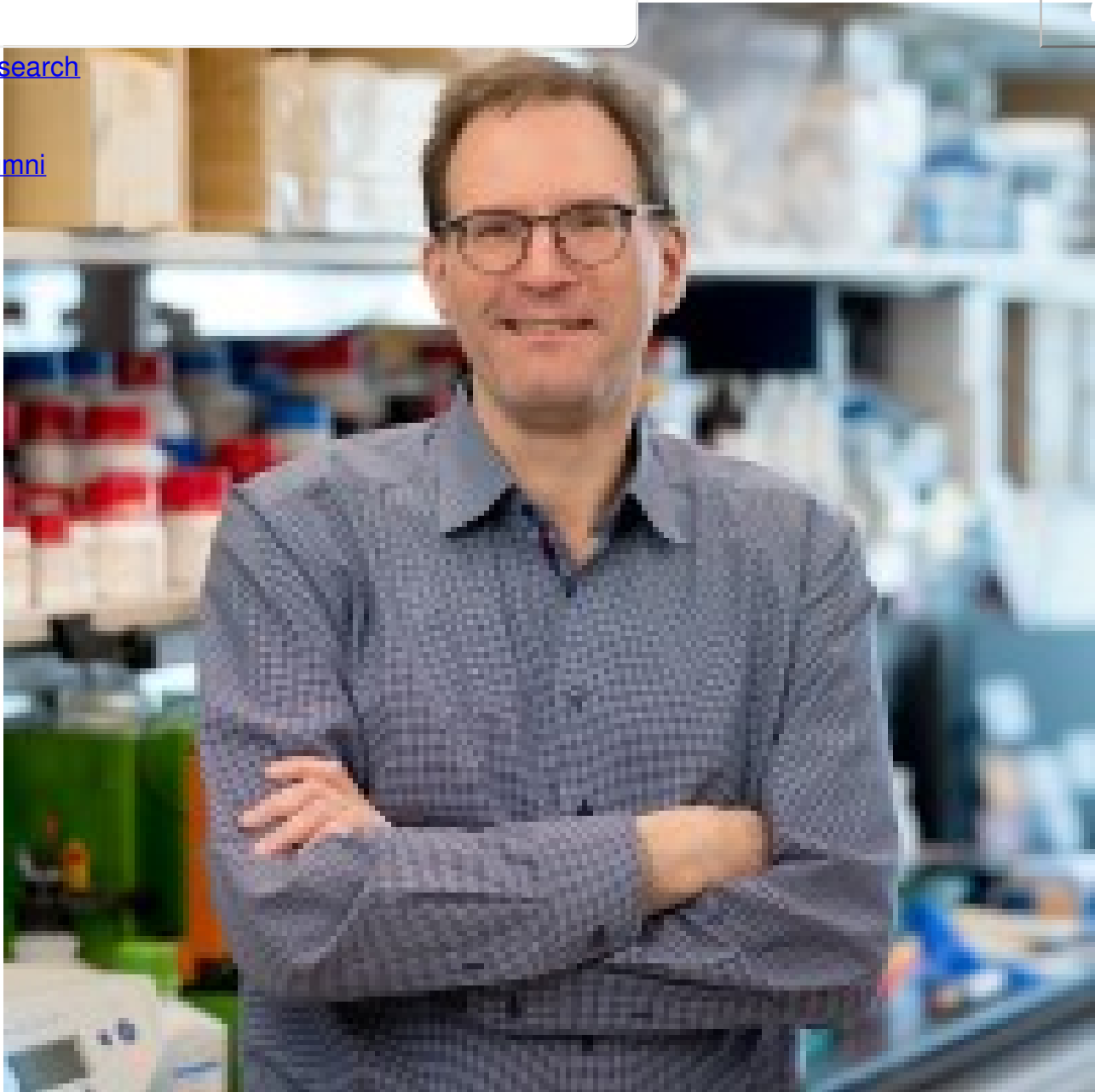
[Cancer Biology](#)

Research

Search input field

[Research](#)

[Alumni](#)



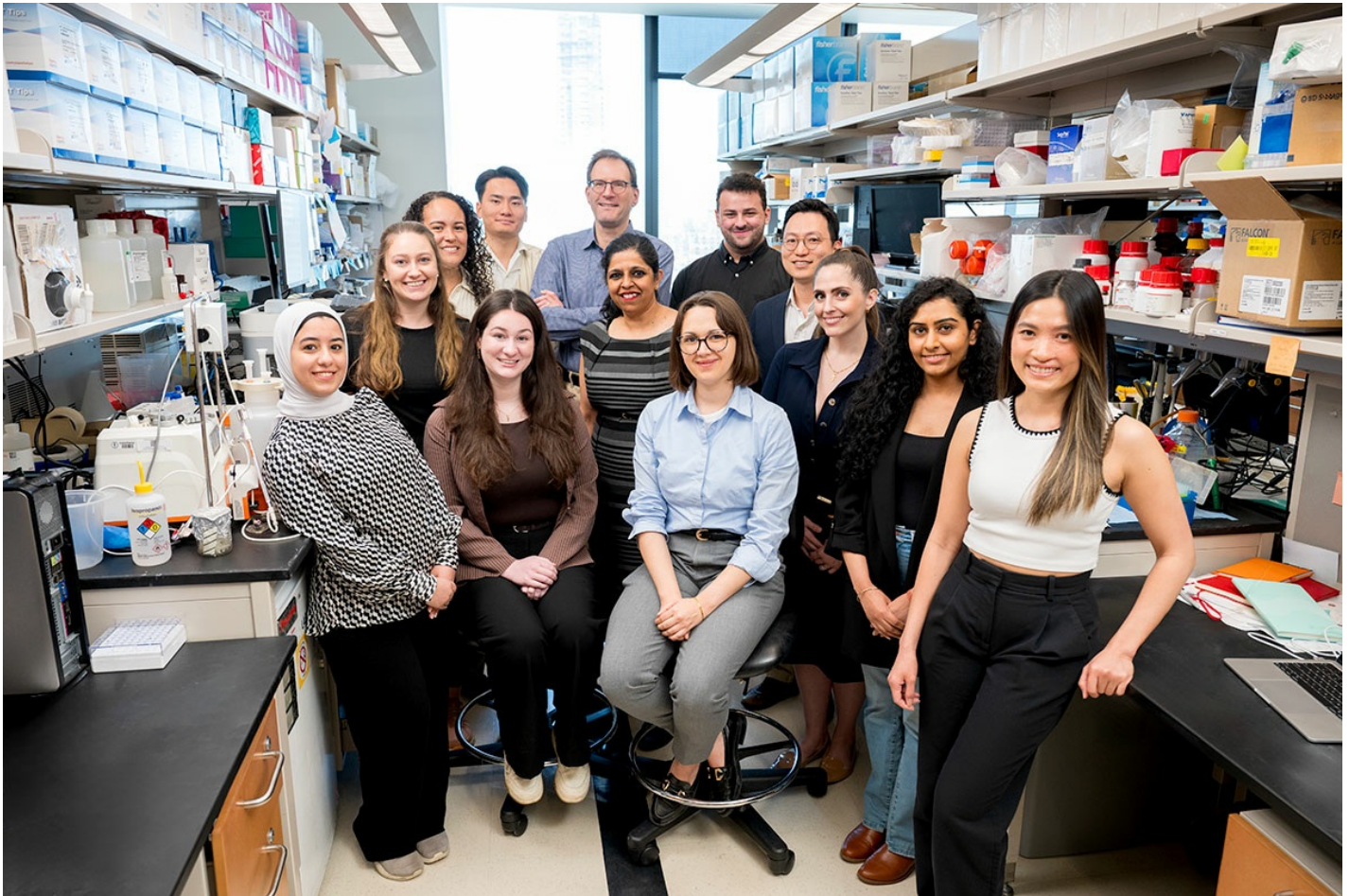
Jan Grimm, MD, PhD

The Grimm lab in the Molecular Pharmacology Program focuses on the development of novel and innovative approaches for cancer diagnostics and therapy. These approaches evaluate underlying biology and utilize nanotechnology, chemistry and physics interrogated with modern imaging methods. The lab focuses currently several avenues: (i) the utilization of nanoparticles for cancer therapy; (ii) novel imaging approaches such as Cerenkov and optoacoustic imaging and (iii) the biology of PSMA both in prostate cancer and neovasculature using a tumor-on-chip microfluidic chip system.

[View Lab Overview \(https://www.sloankettering.edu/research-areas/labs/jan-grimm/overview\)](https://www.sloankettering.edu/research-areas/labs/jan-grimm/overview)

Research Projects

- [Smart Imaging Agents](#)
- [Prostate Cancer Imaging & Prostate-Specific Membrane Antigen \(PSMA\)](#)
- [Cerenkov Imaging](#)



Featured News



[Move Over, Mice: Caterpillars Could Replace Some Mammals in the Study of Human Disease](#)

How scientists are working to develop nonmammalian alternatives that could reduce the number of rodents used in biomedical research.



IN THE CLINIC

[New Imaging Technique Could Improve Cancer Screening and Diagnosis](#)

[in Developing Countries and Rural Areas](#)

A new imaging approach relying on Cerenkov light could sometimes substitute for PET scans and improve diagnostic services in underserved areas.



IN BRIEF

[Can You Hear Me Now? Scientists Find Nanoparticles Have a Language of Their Own](#)

Nanoparticles were thought of a silent partner in imaging technologies. They're now being recognized as an important source of subatomic chatter.

[View All Featured News](#)

Publications Highlights

Quo Vadis, Molecular Imaging? Grimm J, Kiessling F, Pichler BJ. J Nucl Med. 2020 Oct;61(10):1428-1434. doi: 10.2967/jnumed.120.241984. Epub 2020 Aug 28. PMID: 32859706.

Synthesis of the PET Tracer ¹²⁴I-Trametinib for MAPK/ERK Kinase Distribution and Resistance Monitoring. Pratt EC, Isaac E, Stater EP, Yang G, Ouerfelli O, Pillarsetty N, Grimm J. J Nucl Med. 2020 Dec;61(12):1845-1850. doi: 10.2967/jnumed.120.241901. Epub 2020 May 22. PMID: 32444378.

[View All Publications](#)

People



Jan Grimm, MD, PhD

Professor

- Radiologist and Nuclear Medicine physician Jan Grimm develops novel approaches for improved diagnosis, monitoring and therapy of prostate and other cancers.
- MD, University of Hamburg (Germany)
- PhD, University of Kiel (Germany)

grimmj@mskcc.org
Email Address

[646-888-3095](tel:646-888-3095)
Office Phone

[Download CV](#)
PDF File

[View physician profile](#)
Physician profile

Members



Jan Grimm
Member/Professor



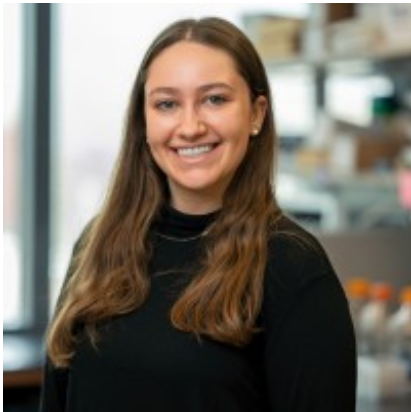
Anuja Ogirala
Senior Research Assistant

Lab
Alumni

Lab Affiliations

Achievements

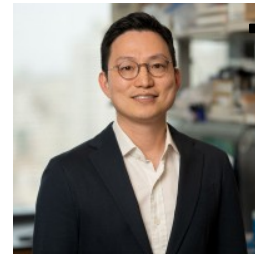
- 2014- NIH Nagy New Investigator Award



Elana Apfelbaum
Graduate Student - Cornell
Pharmacology

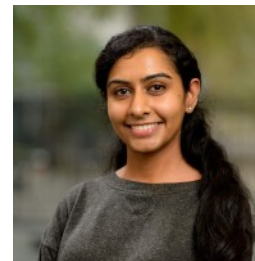


Elisa Chazeau
Research Scholar



Hyungjun Im
Visiting Investigator

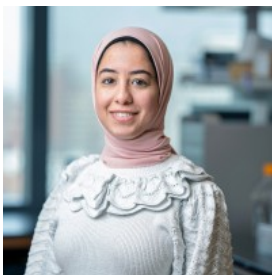
- 2018- The American Society for Clinical Investigation (ASCI) Member



Sarita Mishra
Research Associate

Open Positions

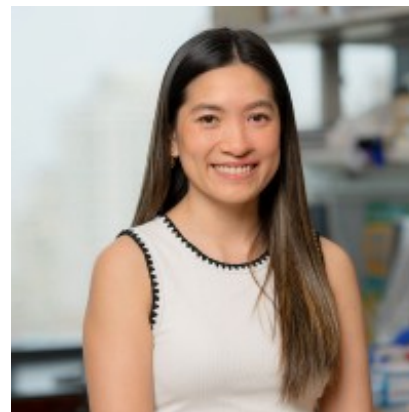
To learn more about available postdoctoral opportunities, please visit our [Career Center](#)



Nermin Mostafa
Research Technician

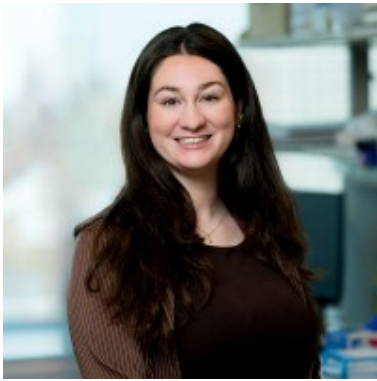


Trong Nghia Nguyen
Graduate Research Assistant

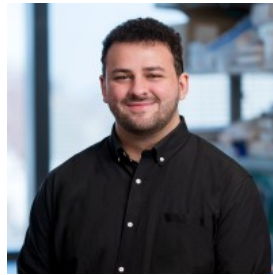


Ngan Phung
Graduate Student- Cornell
Pharmacology

To learn more about compensation and benefits for postdoctoral researchers at MSK, please visit [Resources for Postdocs](#)



Zoe Schoales
Graduate Research Assistant

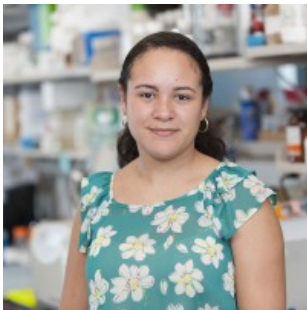


Benjamin Shapiro
Research Technician



Karla Ximena Vazquez
Prada
Research Scholar

Get in Touch



Laura Vidal
Administrative Assistant

grimmj@mskcc.org

Lab Head Email

 [646-888-3095](tel:646-888-3095)

Office Phone

 [646-888-3059](tel:646-888-3059)

Office Fax

 [646-888-3101](tel:646-888-3101)

Lab Phone

Disclosures

Members of the MSK Community often work with pharmaceutical, device, biotechnology, and life sciences companies, and other organizations outside of MSK, to find safe and effective cancer treatments, to improve patient care, and to educate the health care community. These activities outside of MSK further our mission, provide productive collaborations, and promote the practical application of scientific discoveries.

MSK requires doctors, faculty members, and leaders to report (“disclose”) the relationships and financial interests they have with external entities. As a commitment to transparency with our community, we make that information available to the public. Not all disclosed interests and relationships present conflicts of interest. MSK reviews all disclosed interests and relationships to assess whether a conflict of interest exists and whether formal COI management is needed.

Jan Grimm discloses the following relationships and financial interests:

- Gerson Lehrman Group
Professional Services and Activities
- National Institutes of Health (NIH)
Professional Services and Activities
- Society of Nuclear Medicine and Molecular Imaging
Professional Services and Activities
- The Hong Kong Polytechnic University
Professional Services and Activities

The information published here is a complement to other publicly reported data and is for a specific annual disclosure period. There may be differences between information on this and other public sites as a result of different reporting periods and/or the various ways relationships and financial interests are categorized by organizations that publish such data.

This page and data include information for a specific MSK annual disclosure period (January 1, 2024 through disclosure submission in spring 2025). This data reflects interests that may or may not still exist. This data is updated annually.

Learn more about MSK's COI policies [here](#) . For questions regarding MSK's COI-related policies and procedures, email MSK's Compliance Office at ecoi@mskcc.org .

[View all disclosures \(https://www.sloankettering.edu/disclosures\)](https://www.sloankettering.edu/disclosures)

© 2026 Louis V. Gerstner Jr. Graduate School of Biomedical Sciences Memorial Sloan Kettering Cancer Center