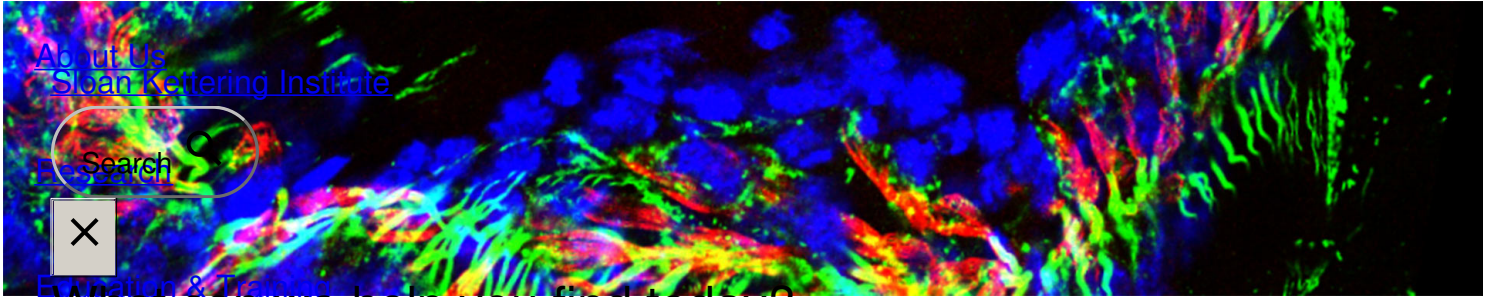


Ready to start planning your care? Call us at [646-926-0945](tel:646-926-0945) to make an appointment.

×



Memorial Sloan Kettering
Cancer Center



[About Us](#)
[Sloan Kettering Institute](#)

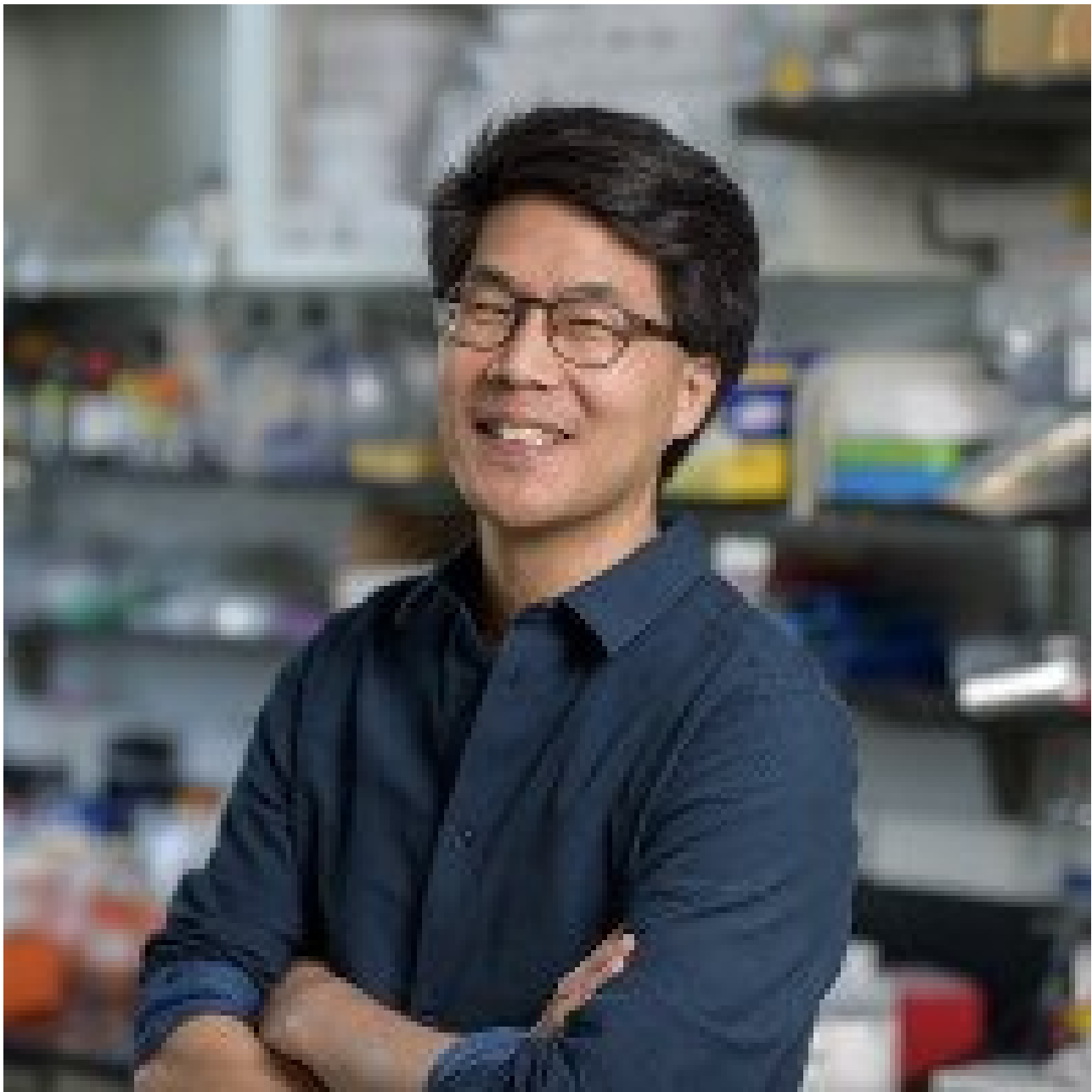
[Search](#)

×

[What can we help you find today?](#)
DEVELOPMENTAL BIOLOGY PROGRAM

[News & Events](#)

[The Eric Lai Lab](#)



Eric C. Lai, PhD

As a laboratory of developmental biology, our guiding interest is to comprehend how complex biological patterns can be assembled with stereotyped precision. This requires a detailed understanding of how cells come to execute appropriate behaviors — be it adoption of specific cell fates, proliferation, or apoptosis — and do so at the right times, in the right places, and in the right numbers. Dysfunction of processes that direct normal tissue patterning results not only in developmental disorder but also underlies adult disease. Tellingly, many factors whose mutation is relevant to human cancer were first identified and characterized with respect to development in model organisms. To study these topics, we utilize integrative approaches, combining genetics,

biochemistry, and genomewide approaches, to elucidate detailed molecular mechanisms and use these to understand in vivo biology as well as decipher genomic regulatory networks.

Research Projects

- [microRNAs and other small regulatory RNAs](#)
- [Alternative mRNA processing and modification](#)
- [Notch Signaling and Neural Transcription Factors](#)



Featured News



[The Secret Life of ALAS1: How a Basic Science Discovery Could Pave](#)

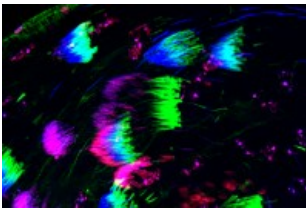
[the Way for Better siRNA Therapies](#)

New findings by researchers at MSK and their collaborators at the Icahn School of Medicine point to an opportunity to improve therapies that use small RNAs to silence disease-causing genes, potentially including those involved in cancer.



[Beyond the Bench: Developmental Biologist Eric Lai](#)

How developmental biologist Eric Lai's approach to science co-evolved with his music, art, and life outside the lab.



[Rumble in the Genome: Unlocking the Secrets of the Tiny RNAs That Keep Self-Serving, Harmful Genes in Check](#)

The common wisdom is that genes are preserved from generation to generation because they help the organism survive and reproduce. But MSK's Dr. Eric Lai's team is showing — in fruit flies — that certain genes can threaten a species' very survival by pursuing their narrow self-interests in passing along their own genetic material.

[View All Featured News](#)

Publications Highlights

Lee S, Lee S, Desnick R, Yasuda M, Lai EC (2024). [Noncanonical role of ALAS1 as a heme-independent inhibitor of small RNA-mediated silencing.](#) *Science*.

Zhang B, Duan H, Kavalier J, Wei L, Eberl DF and Lai EC (2023). [A nonneural miRNA cluster mediates hearing via repression of two neural targets.](#) *Genes & development* 37,

Cover Article.

Shang R, Lee S, Senavirathne G and Lai EC (2023). [microRNAs in action: biogenesis, function and regulation.](#) *Nature Reviews Genetics* 24.

Vedanayagam J, Herbette M, Mudgett H, Lin CJ, Lai CM, McDonough-Goldstein C, Dorus S, Loppin B, Meiklejohn C, Dubrulle R and Lai EC (2023). [Essential and recurrent roles for hairpin RNAs in silencing de novo sex chromosome conflict in *Drosophila simulans*.](#) *PLoS Biology* 21(6).

Zheng L, Liu J, Niu L, Kamran M, Yang A, Jolma A, Dai Q, Hughes TR, Patel DJ, Zhang L, Prasanth SG, Yu Y, Ren A and Lai EC (2022). [Distinct structural bases for sequence-specific DNA binding by mammalian BEN domain proteins.](#) *Genes & Development* 36.

[View All Publications](#)

People



Eric C. Lai, PhD

- The Lai laboratory integrates genetics, biochemistry, and genomewide approaches to study diverse regulatory networks during patterning and behavior.
- BA, Harvard College
- PhD, University of California, San Diego

[✉ lai@mskcc.org](mailto:lai@mskcc.org)
Email Address

[☎ 212-639-5578](tel:212-639-5578)
Office Phone

[📄 Download CV](#)
PDF File

Members



William Glassford
Senior Research Scientist

Lab

Alumni

Lab Affiliations

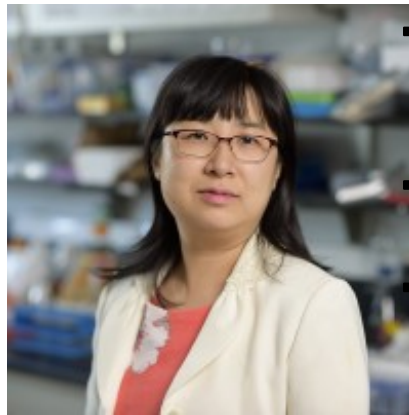
Achievements

- Louise and Allston Boyer Young Investigator Award for Basic Research, Memorial Sloan Kettering

Cancer Center (2009)



Daniel Guzman
Gundermann
Research Scholar



Lijuan Kan
Senior Research Scientist

- Kimmel Scholar, Sidney Kimmel Foundation for Cancer Research (2007-2009)
- V Scholar, V Foundation for Cancer Research (2006-2008)
- Career Award in the Biomedical Sciences, Burroughs Wellcome Fund (2005)
- Special Fellow, Leukemia and Lymphoma Society (2004-2006)

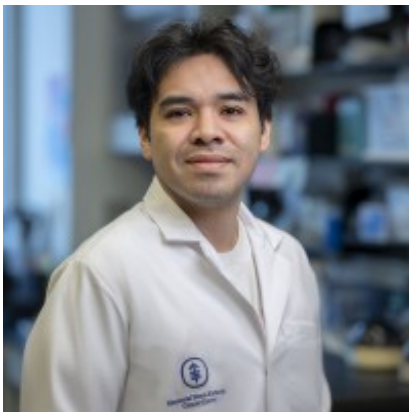


Seungjae Lee
Research Scholar - NYSTEM
Training Award at the CSCB

Open Positions

To learn more about available postdoctoral opportunities, please visit our [Career Center](#)

To learn more about compensation and benefits for postdoctoral researchers at MSK, please visit [Resources for Postdocs](#)



David Morales Vicente
Research Scholar



Meysoon Quraishi
GSK Graduate Student

Career Opportunities

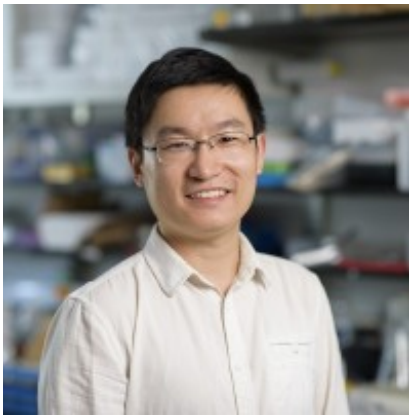
[Apply](#)

[now \(https://www.mskcc.org/research/ski/labs/eric-lai/career-opportunities\)](https://www.mskcc.org/research/ski/labs/eric-lai/career-opportunities)

Get in Touch

✉ laie@mskcc.org


Lab Head Email




Renfu Shang
Research Associate




Rebeccah Stewart
Research Scholar

 [212-639-5578](tel:212-639-5578)

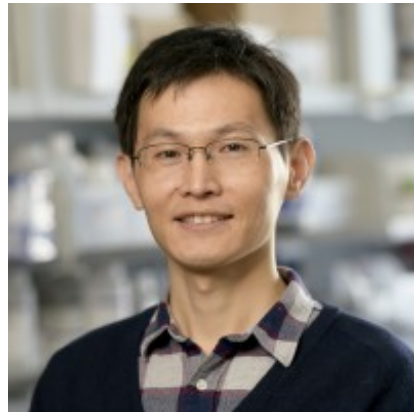
Office Phone

 [212-717-3623](tel:212-717-3623)

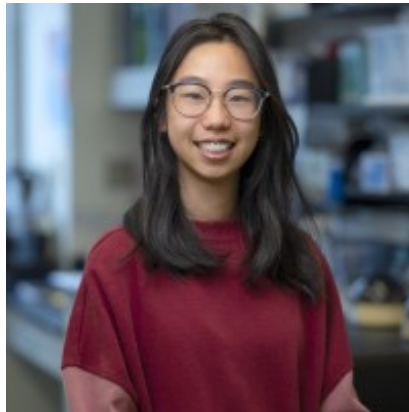
Office Fax

 [212-639-5549](tel:212-639-5549)

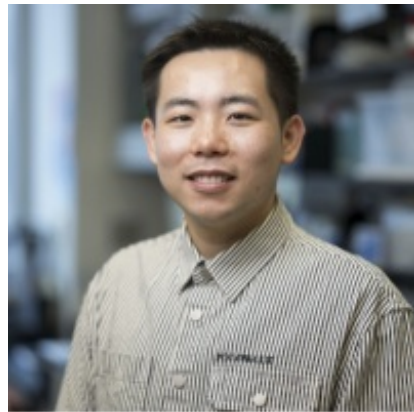
Lab Phone



Binglong Zhang
Research Associate



Xin Yu Zhu Jiang
Graduate Student



Xiaodong (Sheldon) Zou
Research Scholar
management is needed.

Disclosures

Members of the MSK Community often work with pharmaceutical, device, biotechnology, and life sciences companies, and other organizations outside of MSK, to find safe and effective cancer treatments, to improve patient care, and to educate the health care community. These activities outside of MSK further our mission, provide

productive collaborations, and promote the practical application of scientific discoveries.

MSK requires doctors, faculty members, and leaders to report (“disclose”) the relationships and financial interests they have with external entities. As a commitment to transparency with our community, we make that information available to the public. Not all disclosed interests and relationships present conflicts of interest. MSK reviews all disclosed interests and relationships to assess whether a conflict of interest exists and whether formal COI

Eric C. Lai discloses the following relationships and financial interests:

No disclosures meeting criteria for time period

The information published here is a complement to other publicly reported data and is for a specific

annual disclosure period. There may be differences between information on this and other public sites as a result of different reporting periods and/or the various ways relationships and financial interests are categorized by organizations that publish such data.

This page and data include information for a specific MSK annual disclosure period (January 1, 2024 through disclosure submission in spring 2025). This data reflects interests that may or may not still exist. This data is updated annually.

Learn more about MSK's COI policies [here](#) . For questions regarding MSK's COI-related policies and procedures, email MSK's Compliance Office at ecoi@mskcc.org .

[View all disclosures \(https://www.mskcc.org/disclosures\)](https://www.mskcc.org/disclosures)

© 2026 Memorial Sloan Kettering Cancer Center