

Ready to start planning your care? Call us at [646-926-0945](tel:646-926-0945) to make an appointment.

×



Memorial Sloan Kettering
Cancer Center

[About Us](#)
[Sloan Kettering Institute](#)

[Research](#)

×

[Education & Training](#)

What can we help you find today?
DEVELOPMENTAL BIOLOGY PROGRAM

[News & Events](#)

Search

C
R

The Anna-Katerina Hadjantonakis Lab



Anna-Katerina Hadjantonakis, PhD
Chair, Developmental Biology Program, SKI; Alfred P. Sloan Chair

Cancer is a condition arising when cells undergo an identity crisis. Understanding of how cells control their identity, and how they assemble into tissues with normal organization and function during embryonic development provides the essential blueprint for gaining insights into the fundamental biological processes that become deregulated in disease states such as cancer.

Our research focus and goals - how cells form tissues . We are interested in how cells become specialized, and how they collaborate at the population level to collectively build organs. Our focus

is on the endoderm, the progenitor tissue that gives rise to respiratory and digestive tracts, and associated organs such as the lung, liver and pancreas. Our overarching goal is to understand how endodermal organs form - in time and space - from populations of uncommitted progenitor cells in the embryo.

Repair, replace, and regenerate. An aspiration is to develop knowledge that will facilitate future efforts to repair, replace or regenerate diseased or damaged tissues. Our research seeks to gain fundamental insights into the processes by which tissues and organs arise in their native context - the embryo - and consequently, how these mechanisms can be contextually recapitulated or adapted. Furthermore, understanding the processes taking place during normal development paves the way for understanding the mechanisms of cancers in children and young adults (Developmental Oncology).

A multi-disciplinary approach bridging scales. We use mammalian embryo, embryo-derived stem cell, and organoid models, as experimentally tractable platforms for our studies. We have a history of applying cutting-edge high-resolution quantitative methods – from light microscopic imaging to single-cell genomics approaches - to investigate mechanisms driving: (1) the acquisition of cell states and fates leading to the emergence of an endoderm identity, (2) the plasticity and differentiation of endoderm cells and their neighbors, and, (3) the organization and growth of tissue as organs start to take shape from communities of cells.



Three-dimensional visualization of nerves (green) and blood vessels (magenta) in a mouse embryo.

[View Lab Overview \(https://www.mskcc.org/research/ski/labs/anna-katerina-hadjantonakis/overview\)](https://www.mskcc.org/research/ski/labs/anna-katerina-hadjantonakis/overview)

VIDEO | 02:18

Go inside the lab of Anna-Katerina Hadjantonakis from SKI's Developmental Biology Program.

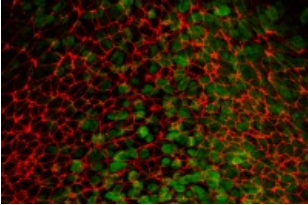
[Video Details \(https://www.mskcc.org/videos/inside-my-lab-anna-katerina-hadjantonakis\)](https://www.mskcc.org/videos/inside-my-lab-anna-katerina-hadjantonakis)

Featured News



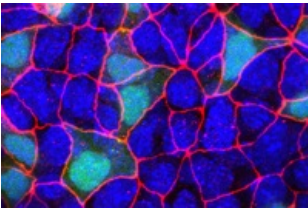
[At Work: Developmental Biologist Anna-Katerina Hadjantonakis](#)

Developmental biologist Kat Hadjantonakis works to gain insights into the critical events that direct the formation and shape of mammalian embryos.



[The Right Moves: How Studying Cell Movement During Embryonic Development May Offer New Insights Into Cancer Metastasis](#)

New insights into the way cells break away from a tissue during embryonic development may also shed new light on the same process in the context of cancer metastasis.



IN THE LAB

[Scientists Rewrite the Textbook of Organ Development, One Cell at a Time](#)

A large study that analyzed nearly 120,000 cells in a developing mouse embryo is full of surprises.

[View All Featured News](#)

Publications Highlights

Abuhashem A, Lee AS, Joyner AL, Hadjantonakis AK. [Rapid and efficient degradation of endogenous proteins in vivo identifies stage-specific roles of RNA Pol II pausing in](#)

[mammalian development.](#) Dev Cell. 2022 Apr 25;57(8):1068-1080.e6. doi: 10.1016/j.devcel.2022.03.013. Epub 2022 Apr 13. PMID: 35421370; PMCID: PMC9047393.

Morgani SM, Su J, Nichols J, Massagué J, Hadjantonakis AK [The transcription factor Rreb1 regulates epithelial architecture, invasiveness and vasculogenesis in early mouse embryos](#) Elife. 2021 Apr 30;10:e64811. doi: 10.7554/eLife.64811. Epub ahead of print. PMID: 33929320

Simon CS, Rahman S, Raina D, Schröter C, Hadjantonakis AK. [Live Visualization of ERK Activity in the Mouse Blastocyst Reveals Lineage-Specific Signaling Dynamics.](#) Dev Cell. 2020 Oct 16; S1534-5807(20)30762-0. doi: 10.1016/j.devcel.2020.09.030

Saiz N, Mora-Bitria L, Rahman S, George H, Herder J, Garcia-Ojalvo J, Hadjantonakis AK. [Growth factor-mediated coupling between lineage size and cell fate choice underlies robustness of mammalian development.](#) Elife. 2020 Jul 28;9:e56079. doi: 10.7554/eLife.56079.

Nowotschin S, Setty M, Kuo YY, Liu V, Garg V, Sharma R, Simon CS, Saiz N, Gardner R, Boutet SC, Church DM, Hoodless PA, Hadjantonakis AK, Pe'er D. [The emergent landscape of the mouse gut endoderm at single-cell resolution.](#) Nature. 2019 May;569(7756):361-367. doi: 10.1038/s41586-019-1127-1.

[View All Publications](#)

People



Anna-Katerina Hadjantonakis, PhD

Chair, Developmental Biology Program, SKI; Alfred P. Sloan Chair

- The Hadjantonakis laboratory studies pluripotency and cell fate specification, tissue patterning and morphogenesis, in mammalian embryos and stem cell-derived embryo models.
- PhD, Imperial College (London)

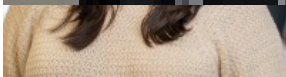
✉ hadjanta@mskcc.org

Email Address

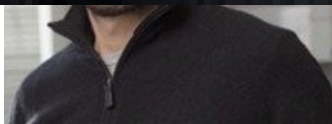
☎ [212-639-3159](tel:212-639-3159)

Office Phone

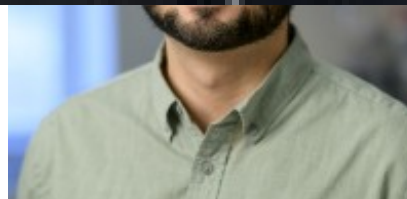
Members



Nicole Clerico-Benn
Assistant to Chair



Alexandre Francou
Senior Research Scientist



Mohamed Gatie
Postdoctoral Research
Associate

Lab
Summary

Lab Affiliations

Open Positions

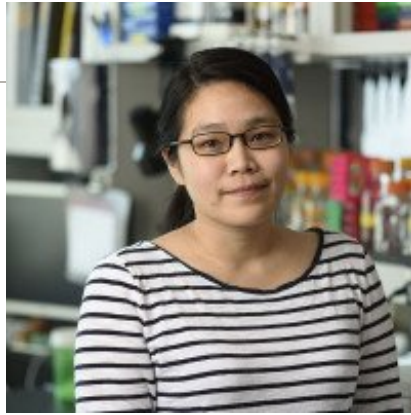
To learn more about

available postdoctoral opportunities, please visit our [Career Center](#)

To learn more about compensation and benefits for postdoctoral researchers at MSK, please visit



Woonyung Hur
Postdoctoral Research Fellow -
joint with Dr. Eric Siggia at
Rockefeller University



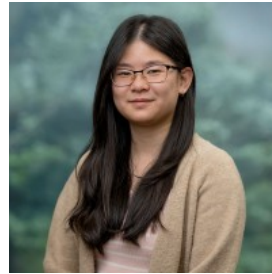
Ying-Yi Kuo
Senior Research Assistant -
Lab Manager

Postdoctoral Fellow Position

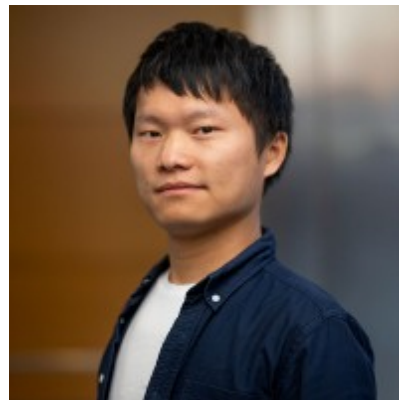
[Apply](#)



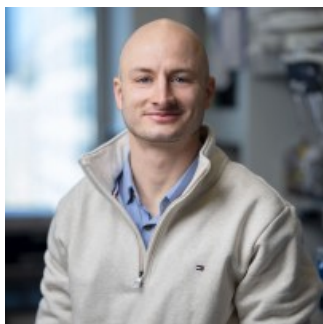
Sonja Nowotschin
Senior Research Scientist



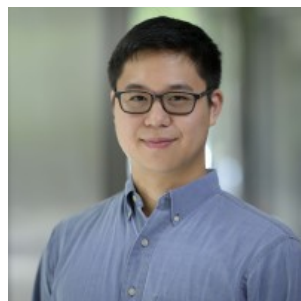
Katherient Hao
Research Technician



Jinrong Hu
Postdoctoral Research Scholar



Lucas Schroefl
Computational Biologist I



Nicholas Wen
GSK Graduate Student

[now \(https://www.mskcc.org/research/ski/labs/anna-katerina-hadjantonakis/postdoctoral-position\)](https://www.mskcc.org/research/ski/labs/anna-katerina-hadjantonakis/postdoctoral-position)

Get in Touch

✉ hadjanta@mskcc.org

Lab Head Email

☎ [212-639-3159](tel:212-639-3159)

Office Phone

☎ [212-639-8215](tel:212-639-8215)

Lab Phone

☎ [646-422-2355](tel:646-422-2355)

Lab Fax

Disclosures

Members of the MSK Community often work with pharmaceutical, device, biotechnology, and life sciences companies, and other organizations outside of MSK, to find safe and effective cancer treatments, to improve patient care, and to educate the health care community. These activities outside of MSK further our mission, provide productive collaborations, and promote the practical application of scientific discoveries.

MSK requires doctors, faculty members, and leaders to report (“disclose”) the relationships and financial interests they have with external entities. As a commitment to transparency with our community, we make that information available to the public. Not all disclosed interests and relationships present conflicts of interest. MSK reviews all disclosed interests and relationships to assess whether a conflict of interest exists and whether formal COI management is needed.

Anna-Katerina Hadjantonakis discloses the following relationships and financial interests:

No disclosures meeting criteria for time period

The information published here is a complement to other publicly reported data and is for a specific annual disclosure period. There may be differences between information on this and other public sites as a result of different reporting periods and/or the various ways relationships and financial interests are categorized by organizations that publish such data.

This page and data include information for a specific MSK annual disclosure period (January 1,

2024 through disclosure submission in spring 2025). This data reflects interests that may or may not still exist. This data is updated annually.

Learn more about MSK's COI policies [here](#) . For questions regarding MSK's COI-related policies and procedures, email MSK's Compliance Office at ecoi@mskcc.org .

[View all disclosures \(https://www.mskcc.org/disclosures\)](https://www.mskcc.org/disclosures)

© 2026 Memorial Sloan Kettering Cancer Center