



[Welcome to GSK](#)
Search

[Research](#)
[Admissions](#)

What can we help you find today?

Faculty

Search

Faculty members who do not serve as dissertation mentors but who make contributions to the education of our students by teaching or serving as clinical mentors are appointed as [Gerstner Sloan Kettering Special Contributing Faculty](#) .

Research about each faculty member's area of investigation.

Faculty members who do not serve as dissertation mentors but who make contributions to the education of our students by teaching or serving as clinical mentors are appointed as [Gerstner Sloan Kettering Special Contributing Faculty](#) .

Search by name:

and/or

Area of Research:

- Animal Models of Disease
- Apoptosis
- Biochemistry
- Cancer Engineering
- Cancer Genetics and Epidemiology
- Cancer Therapeutics



[Learn more about the honors and awards our scientists have received.](#)



[Meet the researchers who teach our students or serve as their clinical mentors.](#)



[Mentorship](#)

139 Faculty Members found



MOLECULAR PHARMACOLOGY PROGRAM

[Omar Abdel-Wahab, MD](#)

Professor

Physician-scientist Omar Abdel-Wahab studies the functional genomics of hematopoietic malignancies.

- MD, Duke University School of Medicine

 [View Publications](#)

 abdelwao@mskcc.org



CELL BIOLOGY PROGRAM

[Maria Akhmanova, PhD](#)

Assistant Professor

The Akhmanova laboratory studies cell invasion and migration through tissues, and how it is controlled by surrounding tissue cells.

- PhD, Lomonosov Moscow State University

 [View Publications](#)

 akhmanm1@mskcc.org



CHEMICAL BIOLOGY PROGRAM

[Heeseon An, PhD](#)

Assistant Professor

Heeseon An's lab studies protein degradation in health and disease using chemical, biological, and proteomics tools.

- BS and MS, Chemistry, Seoul National University
- PhD, Chemistry, Northwestern University
- Postdoc, Cell Biology, Harvard Medical School

 [View Publications](#)

 AnH@mskcc.org



MEMORIAL HOSPITAL RESEARCH LABORATORIES

[Cristina R. Antonescu, MD](#)

Professor

The Antonescu lab focuses on translocation-associated sarcoma pathogenesis and generating in vitro models.

- MD, Carol Davila Faculty of Medicine and Pharmacy

 [View Publications](#)

 antonesc@mskcc.org



MOLECULAR BIOLOGY PROGRAM

[Naama Aviram, PhD](#)

Assistant Professor

The Aviram Lab investigates the molecular mechanisms that protect microorganisms from their own pathogenic invaders.

- PhD, Weizmann Institute of Science (2017)
- Postdoc, The Rockefeller University (2024)

[!\[\]\(b39c89771cd6fb2128a8c57aa7d97f9a_img.jpg\) View Publications](#)

[!\[\]\(d0a1791f26d167e866e44ebbf83efebe_img.jpg\) aviramn@mskcc.org](mailto:aviramn@mskcc.org)



CHEMICAL BIOLOGY PROGRAM

[Daniel Bachovchin, PhD](#)

Professor

Chemical biologist Daniel Bachovchin designs selective inhibitors to study enzymes and pathways in cancer and immune system signaling.

- PhD, The Scripps Research Institute
- AB, Harvard College

[!\[\]\(e1d6102fe77919492c04879c8450f1f5_img.jpg\) View Publications](#)

[!\[\]\(73002692dd5e7a64e60946be3158e719_img.jpg\) bachovcd@mskcc.org](mailto:bachovcd@mskcc.org)



IMMUNO-ONCOLOGY PROGRAM

[Vinod Balachandran, MD](#)

Professor

Surgeon scientist Vinod Balachandran develops novel immunotherapies for pancreatic cancer.

- MD, State University of New York at Stony Brook

[!\[\]\(5abce1a84a655b073239ab33e1199487_img.jpg\) View Publications](#)



DEVELOPMENTAL BIOLOGY PROGRAM

[Mary Baylies, PhD](#)

Professor

The Baylies laboratory studies the mechanisms that form and maintain muscle both during normal development and in disease.

- PhD, The Rockefeller University

[View Publications](#)

m-baylies@ski.mskcc.org



MEMORIAL HOSPITAL RESEARCH LABORATORIES

[Michael F. Berger, PhD](#)

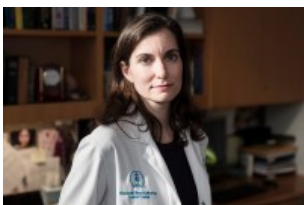
Professor

Researcher Michael Berger focuses on massively parallel sequencing of tumor DNA for biomarker discovery and clinical diagnostics.

- PhD, Harvard University

[View Publications](#)

bergerm1@mskcc.org



HUMAN ONCOLOGY & PATHOGENESIS PROGRAM

[Adrienne A. Boire, MD, PhD](#)

Associate Professor

Physician-scientist Adrienne Boire studies metastasis to the central nervous system.

- PhD, Tufts University, Boston, MA
- MD, University of Chicago, Chicago, IL

 [View Publications](#)

- [1](#)
- [2](#)
- [3](#)
- [4](#)
- [5](#)
- [6](#)
- [7](#)
- [8](#)
- [9](#)
- ...

PREVIOUS

[Research](#)

NEXT

[Special Contributing Faculty](#)

© 2026 Louis V. Gerstner Jr. Graduate School of Biomedical Sciences Memorial Sloan Kettering Cancer Center